

STAMBENO POSLOVNA ZGRADA,
ĐAKOVO, A. STARČEVIĆA 7
DRAGIĆ NEKRETNINE d.o.o.

KATALOG STANOVA

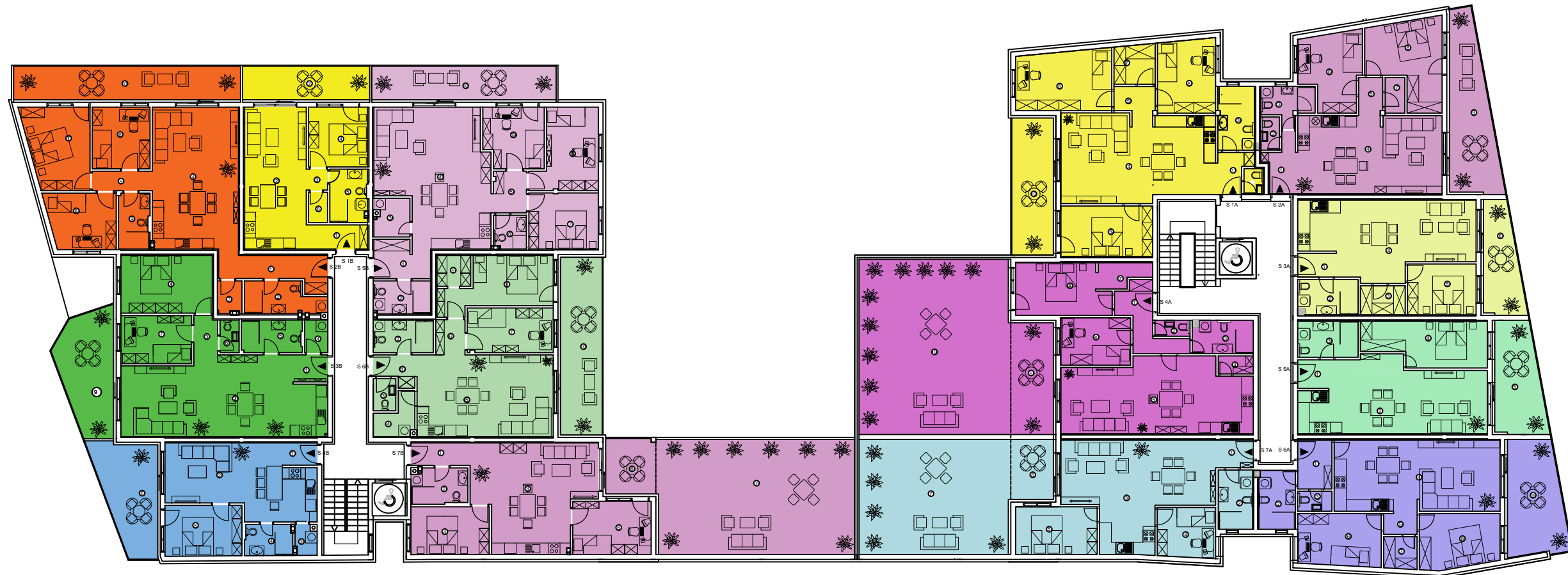
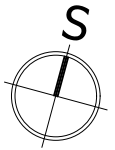


STAMBENO POSLOVNA ZGRADA,
ĐAKOVO, A. STARČEVIĆA 7
DRAGIĆ NEKRETNINE d.o.o.

1. KAT

1. KAT
TLORIS

MJ 1:250



LAMELA B

LAMELA A

LAMELA B 1. kat - iskaz neto površina		
Broj	Prostorija	Površina
STAN 1B		
1	HODNIK	3,97 m ²
2	DNEVNI BORAVAK, KUHINJA I BLAGOVAONICA	23,36 m ²
3	DEGAŽMAN	1,19 m ²
4	SOBA	9,43 m ²
5	KUPAONICA	5,27 m ²
6	OSTAVA	1,53 m ²
UKUPNO STAN 1B		44,75 m ²
7	LOĐA	11,44 m ²
SVEUKUPNO STAN 1B		56,19 m ²
STAN 2B		
1	HODNIK	8,05 m ²
2	KUPAONICA	6,11 m ²
3	OSTAVA	1,98 m ²
4	DNEVNI BORAVAK, KUHINJA I BLAGOVAONICA	32,62 m ²
5	DEGAŽMAN	3,15 m ²
6	SOBA	9,51 m ²
7	SOBA	13,50 m ²
8	SOBA	10,07 m ²
9	KUPAONICA	4,59 m ²
UKUPNO STAN 2B		89,58 m ²
10	LOĐA	20,40 m ²
SVEUKUPNO STAN 2B		109,98 m ²

LAMELA B 1. kat - iskaz neto površina		
Broj	Prostorija	Površina
STAN 3B		
1	HODNIK	2,51 m ²
2	KUHINJA, BLAGOVAONICA I DNEVNI BORAVAK	40,26 m ²
3	DEGAŽMAN	2,44 m ²
4	OSTAVA	2,00 m ²
5	KUPAONICA	5,21 m ²
6	WC	1,66 m ²
7	SOBA	9,08 m ²
8	SOBA	14,12 m ²
UKUPNO STAN 3B		77,28 m ²
9	BALKON	16,32 m ²
SVEUKUPNO STAN 3B		93,60 m ²
STAN 4B		
1	HODNIK	2,07 m ²
2	KUHINJA, BLAGOVAONICA I DNEVNI BORAVAK	25,76 m ²
3	OSTAVA	1,65 m ²
4	KUPAONICA	3,93 m ²
5	SOBA	10,44 m ²
UKUPNO STAN 4B		43,85 m ²
6	BALKON	15,70 m ²
SVEUKUPNO STAN 4B		59,55 m ²

LAMELA B 1. kat - iskaz neto površina		
Broj	Prostorija	Površina
STAN 5B		
1	HODNIK	5,39 m ²
2	KUPAONICA	4,95 m ²
3	OSTAVA	3,57 m ²
4	KUHINJA, BLAGOVAONICA I DNEVNI BORAVAK	37,71 m ²
5	DEGAŽMAN	3,77 m ²
6	WC	2,87 m ²
7	SOBA	10,42 m ²
8	SOBA	12,43 m ²
9	SOBA	9,60 m ²
UKUPNO STAN 5B		90,71 m ²
10	LOĐA	16,57 m ²
SVEUKUPNO STAN 5B		107,28 m ²
STAN 6B		
1	HODNIK	3,04 m ²
2	KUPAONICA	5,16 m ²
3	WC	1,95 m ²
4	OSTAVA	3,54 m ²
5	KUHINJA, BLAGOVAONICA I DNEVNI BORAVAK	29,71 m ²
6	DEGAŽMAN	2,77 m ²
7	SOBA	10,21 m ²
8	SOBA	13,26 m ²
9	GARDEROBA	2,80 m ²
UKUPNO STAN 6B		72,44 m ²
10	LOĐA	19,76 m ²
SVEUKUPNO STAN 6B		92,20 m ²

LAMELA B 1. kat - iskaz neto površina		
Broj	Prostorija	Površina
STAN 7B		
1	HODNIK	3,56 m ²
2	KUPAONICA	5,26 m ²
3	KUHINJA, BLAGOVAONICA I DNEVNI BORAVAK	31,11 m ²
4	SOBA	10,01 m ²
5	SOBA	11,15 m ²
UKUPNO STAN 7B		61,09 m ²
6	NATKRIVENA TERASA	7,42 m ²
7	NENATKRIVENA TERASA	60,77 m ²
SVEUKUPNO STAN 7B		129,28 m ²
ZAJEDNIČKI PROSTOR "LAMELA B"		
1	HODNIK I STUBIŠTE	32,53 m ²

LAMELA A 1. kat - iskaz neto površina		
Broj	Prostorija	Površina
STAN 1A		
1	HODNIK	3,34 m ²
2	WC	1,33 m ²
3	KUPAONICA	6,21 m ²
4	DNEVNI BORAVAK, KUHINJA I BLAGOVAONICA	35,52 m ²
5	DEGAŽMAN	2,64 m ²
6	SOBA	11,29 m ²
7	OSTAVA	4,29 m ²
8	SOBA	15,08 m ²
9	SOBA	12,39 m ²
UKUPNO STAN 1A		92,09 m ²
10	LOĐA	15,22 m ²
SVEUKUPNO STAN 1A		107,31 m ²
STAN 2A		
1	HODNIK	4,14 m ²
2	WC	1,64 m ²
3	KUPAONICA	4,51 m ²
4	DNEVNI BORAVAK, KUHINJA I BLAGOVAONICA	30,11 m ²
5	DEGAŽMAN	2,41 m ²
6	SOBA	11,52 m ²
7	OSTAVA	1,87 m ²
8	SOBA	14,63 m ²
UKUPNO STAN 2A		70,83 m ²
9	TERASA	19,32 m ²
SVEUKUPNO STAN 2A		90,15 m ²

LAMELA A 1. kat - iskaz neto površina		
Broj	Prostorija	Površina
STAN 3A		
1	HODNIK	2,46 m ²
2	KUPAONICA	5,49 m ²
3	OSTAVA	3,47 m ²
4	DNEVNI BORAVAK, KUHINJA I BLAGOVAONICA	31,83 m ²
5	SOBA	9,31 m ²
UKUPNO STAN 3A		52,56 m ²
6	LOĐA	10,45 m ²
SVEUKUPNO STAN 3A		63,01 m ²
STAN 4A		
1	HODNIK	6,70 m ²
2	WC	1,42 m ²
3	KUPAONICA	5,22 m ²
4	OSTAVA	1,69 m ²
5	KUHINJA, BLAGOVAONICA I DNEVNI BORAVAK	35,82 m ²
6	SOBA	8,84 m ²
7	GARDEROBA	3,14 m ²
8	SOBA	12,33 m ²
UKUPNO STAN 4A		75,16 m ²
9	LOĐA	12,71 m ²
10	TERASA	70,57 m ²
SVEUKUPNO STAN 4A		158,44 m ²

LAMELA A 1. kat - iskaz neto površina		
Broj	Prostorija	Površina
STAN 5A		
1	HODNIK	2,37 m ²
2	KUHINJA, BLAGOVAONICA I DNEVNI BORAVAK	33,24 m ²
3	KUPAONICA	5,80 m ²
4	SOBA	13,97 m ²
UKUPNO STAN 5A		55,38 m ²
5	LOĐA	13,62 m ²
SVEUKUPNO STAN 5A		69,00 m ²
STAN 6A		
1	HODNIK	4,46 m ²
2	KUPAONICA	5,72 m ²
3	WC	1,75 m ²
4	KUHINJA, BLAGOVAONICA I DNEVNI BORAVAK	31,43 m ²
5	DEGAŽMAN	2,01 m ²
6	SOBA	11,58 m ²
7	OSTAVA	2,86 m ²
8	SOBA	11,45 m ²
UKUPNO STAN 6A		71,26 m ²
9	LOĐA	16,62 m ²
SVEUKUPNO STAN 6A		87,88 m ²

LAMELA A 1. kat - iskaz neto površina		
Broj	Prostorija	Površina
STAN 7A		
1	HODNIK	2,78 m ²
2	KUPAONICA	5,42 m ²
3	KUHINJA, BLAGOVAONICA I DNEVNI BORAVAK	34,18 m ²
4	SOBA	7,75 m ²
5	SOBA	10,40 m ²
UKUPNO STAN 7A		60,53 m ²
6	LOĐA	6,84 m ²
7	TERASA	46,33 m ²
SVEUKUPNO STAN 7A		113,70 m ²

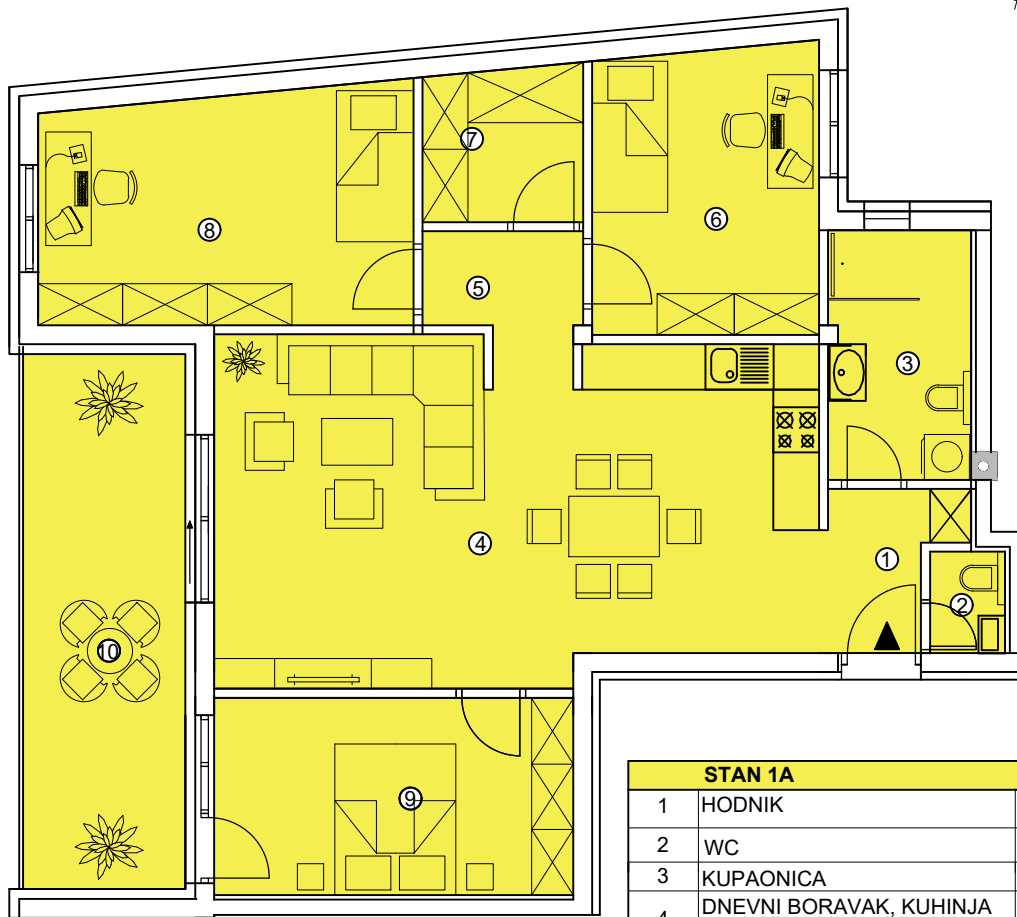
ZAJEDNIČKI PROSTOR "LAMELA A"		
Broj	Prostorija	Površina
1	HODNIK I STUBIŠTE	47,06 m ²

LAMELA A

1. KAT

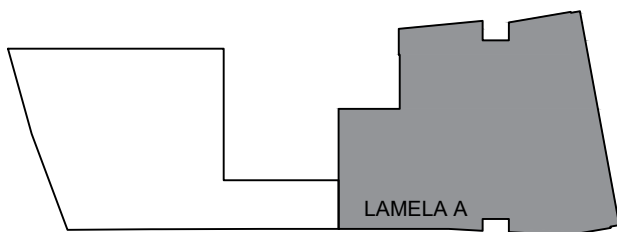
MJ 1:100

STAN 1A

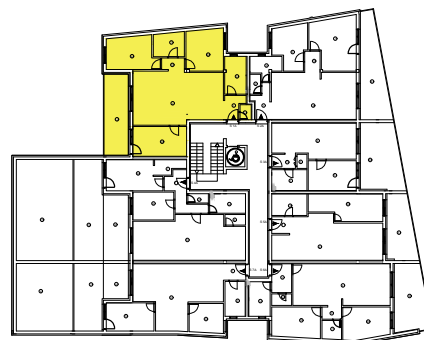


STAN 1A		
1	HODNIK	3,34 m ²
2	WC	1,33 m ²
3	KUPAONICA	6,21 m ²
4	DNEVNI BORAVAK, KUHINJA I BLAGAVAONA	35,52 m ²
5	DEGAŽMAN	2,64 m ²
6	SOBA	11,29 m ²
7	OSTAVA	4,29 m ²
8	SOBA	15,08 m ²
9	SOBA	12,39 m ²
UKUPNO STAN 1A		92,09 m²
10	LOĐA	15,22 m ²
SVEUKUPNO STAN 1A		107,31 m²

POZICIJA ZGRADE



POZICIJA STANA 1A

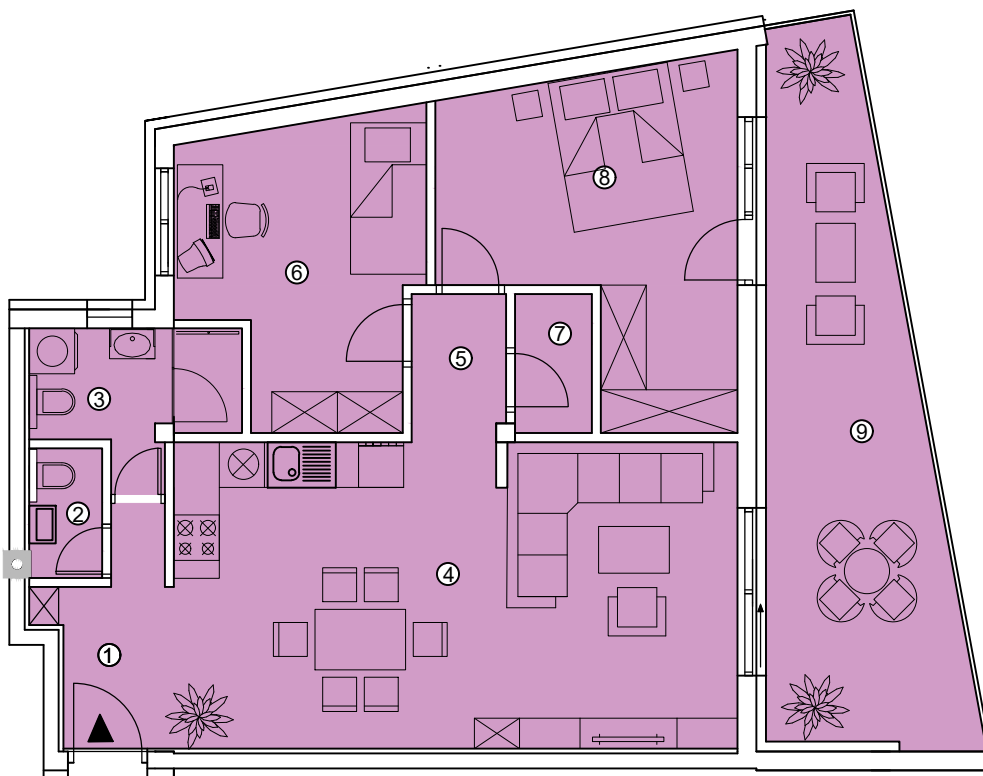
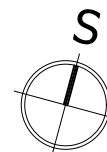


LAMELA A

1. KAT

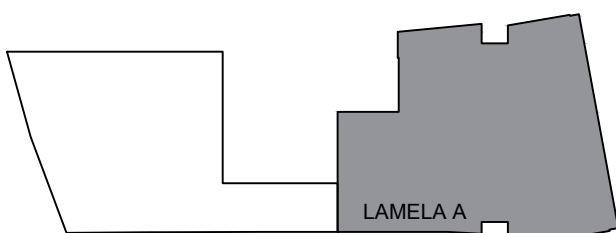
MJ 1:100

STAN 2A

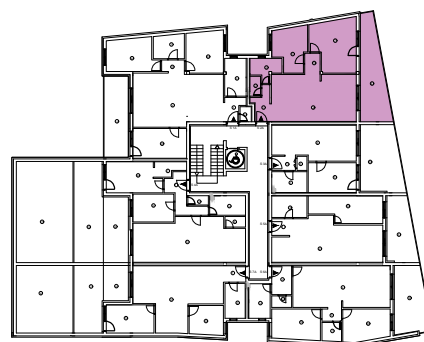


STAN 2A		
1	HODNIK	4,14 m ²
2	WC	1,64 m ²
3	KUPAONICA	4,51 m ²
4	DNEVNI BORAVAK, KUHINJA I BLAGOVAONICA	30,11 m ²
5	DEGAŽMAN	2,41 m ²
6	SOBA	11,52 m ²
7	OSTAVA	1,87 m ²
8	SOBA	14,63 m ²
UKUPNO STAN 2A		70,83 m²
9	TERASA	19,32 m ²
SVEUKUPNO STAN 2A		90,15 m²

POZICIJA ZGRADE



POZICIJA STANA 2A

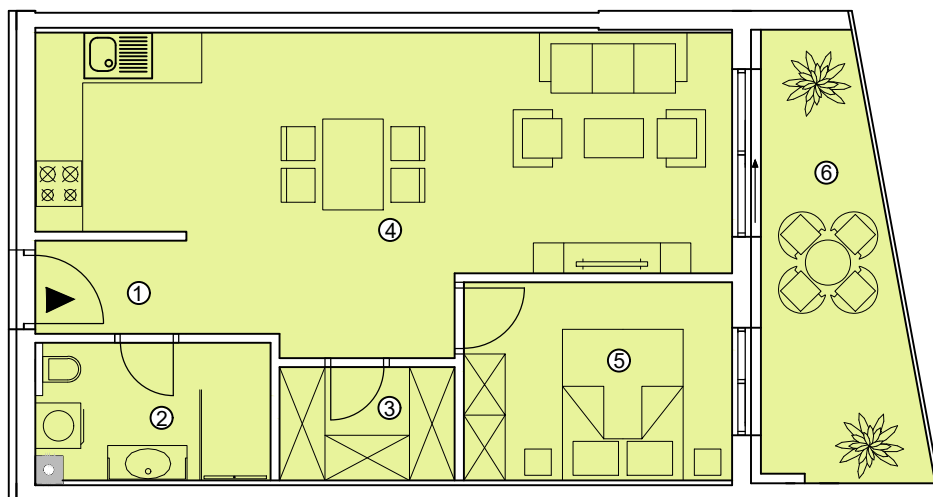
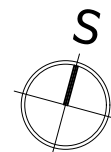


LAMELA A

1. KAT

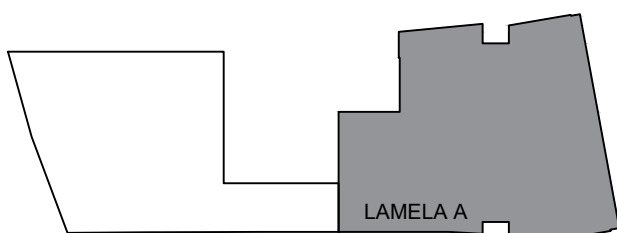
MJ 1:100

STAN 3A

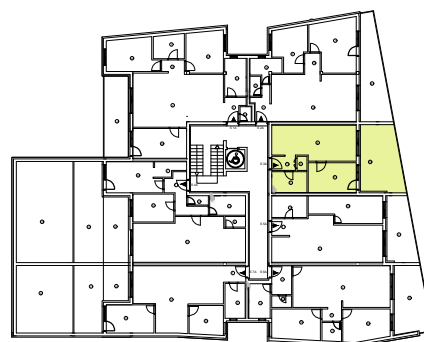


STAN 3A		
1	HODNIK	2,46 m ²
2	KUPAONICA	5,49 m ²
3	OSTAVA	3,47 m ²
4	DNEVNI BORAVAK, KUHINJA I BLAGOVAONICA	31,83 m ²
5	SOBA	9,31 m ²
UKUPNO STAN 3A		52,56 m ²
6	LOĐA	10,45 m ²
SVEUKUPNO STAN 3A		63,01 m ²

POZICIJA ZGRADE



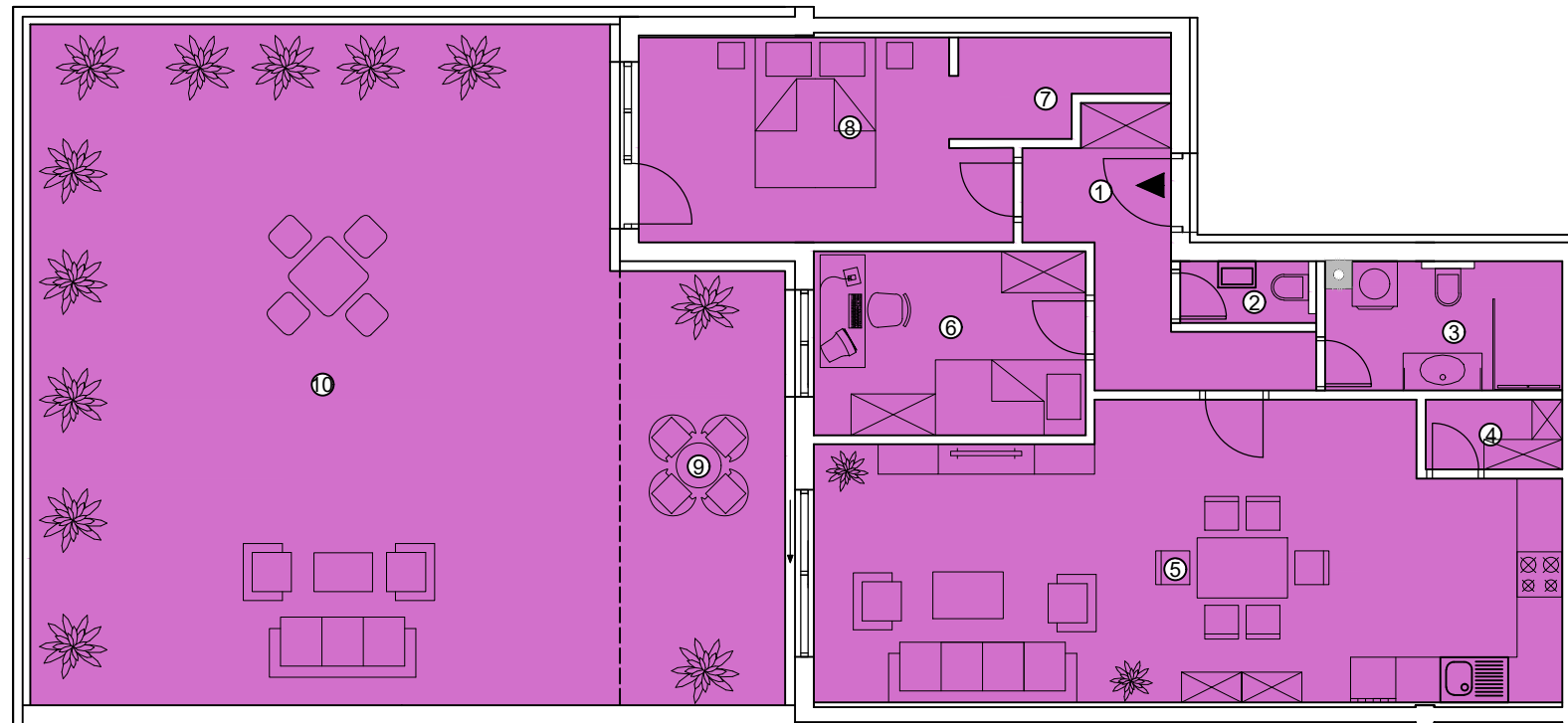
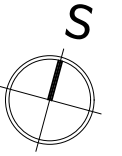
POZICIJA STANA 3A



LAMELA A

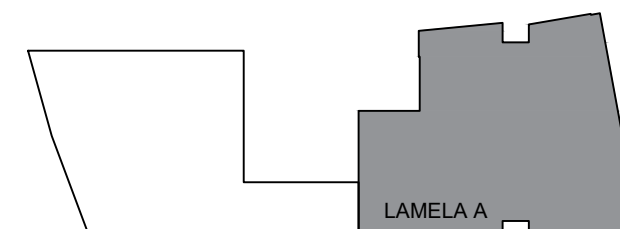
1. KAT
STAN 4A

MJ 1:100

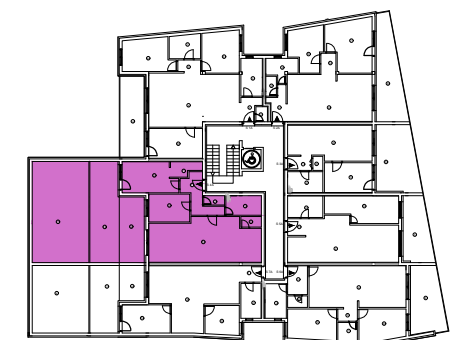


STAN 4A		
1	HODNIK	6,70 m ²
2	WC	1,42 m ²
3	KUPAONICA	5,22 m ²
4	OSTAVA	1,69 m ²
5	KUHINJA,BLAGOVAONICA I DNEVNI BORAVAK	35,82 m ²
6	SOBA	8,84 m ²
7	GARDEROBA	3,14 m ²
8	SOBA	12,33 m ²
UKUPNO STAN 4A		75,16 m ²
9	LOĐA	12,71 m ²
10	TERASA	70,57 m ²
SVEUKUPNO STAN 4A		158,44 m ²

POZICIJA ZGRADE



POZICIJA STANA 4A

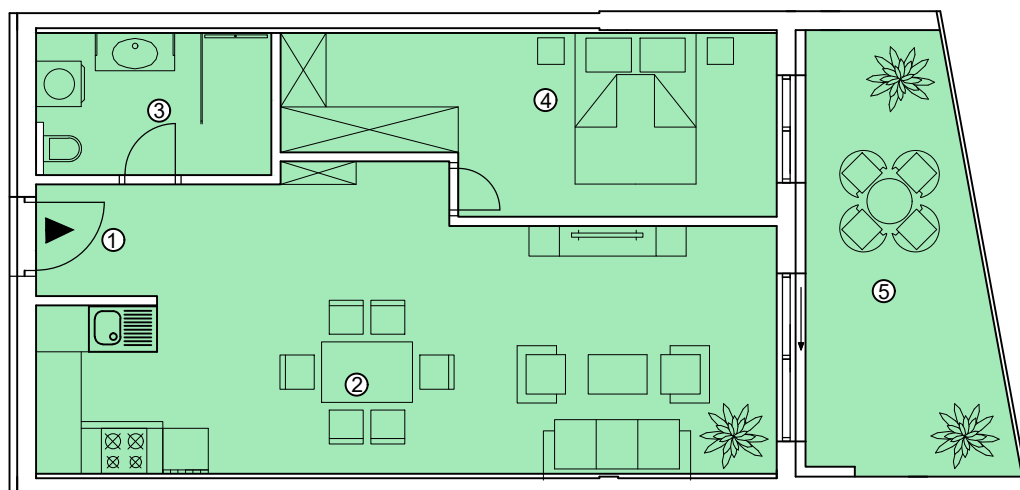
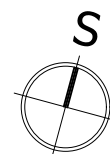


LAMELA A

1. KAT

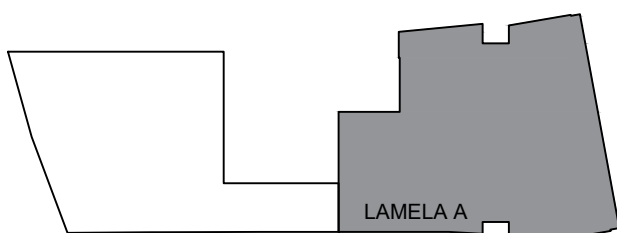
MJ 1:100

STAN 5A

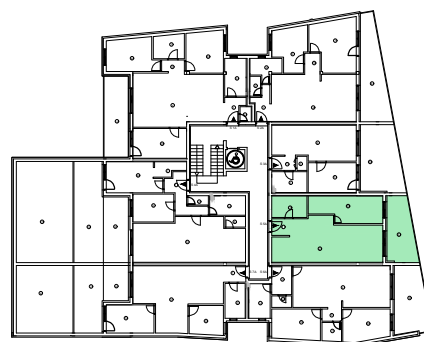


STAN 5A		
1	HODNIK	2,37 m ²
2	KUHINJA, BLAGOVAONICA I DNEVNI BORAVAK	33,24 m ²
3	KUPAONICA	5,80 m ²
4	SOBA	13,97 m ²
UKUPNO STAN 5A		55,38 m ²
5	LOĐA	13,62 m ²
SVEUKUPNO STAN 5A		69,00 m ²

POZICIJA ZGRADE



POZICIJA STANA 5A

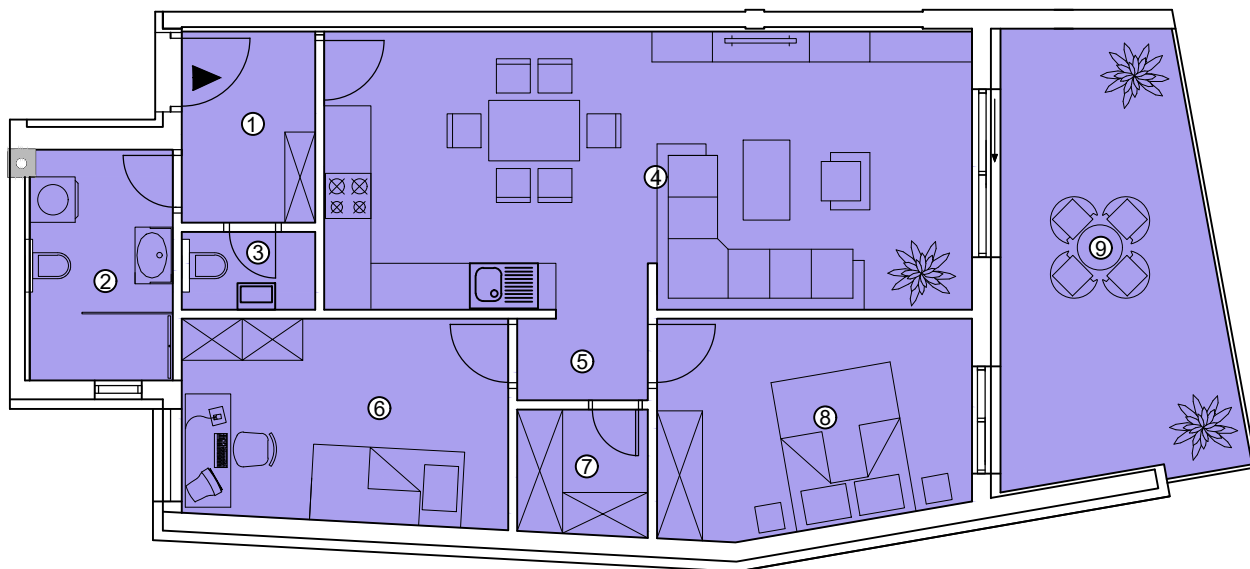
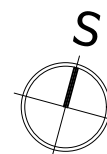


LAMELA A

1. KAT

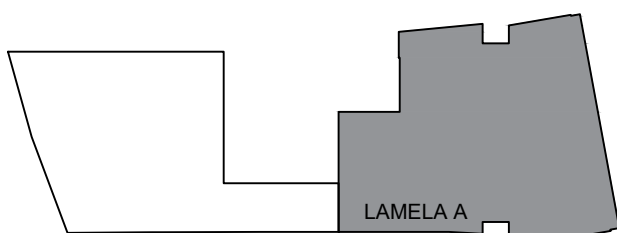
MJ 1:100

STAN 6A

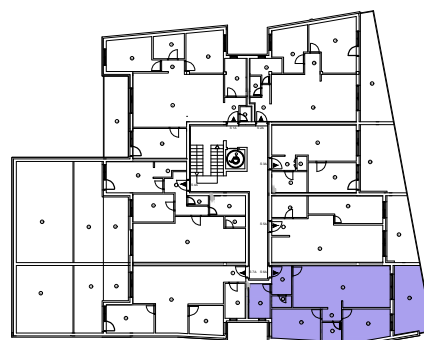


STAN 6A		
1	HODNIK	4,46 m ²
2	KUPAONICA	5,72 m ²
3	WC	1,75 m ²
4	KUHINJA, BLAGOVAONICA I DNEVNI BORAVAK	31,43 m ²
5	DEGAŽMAN	2,01 m ²
6	SOBA	11,58 m ²
7	OSTAVA	2,86 m ²
8	SOBA	11,45 m ²
UKUPNO STAN 6A		71,26 m²
9	LOĐA	16,62 m ²
SVEUKUPNO STAN 6A		87,88 m²

POZICIJA ZGRADE



POZICIJA STANA 6A

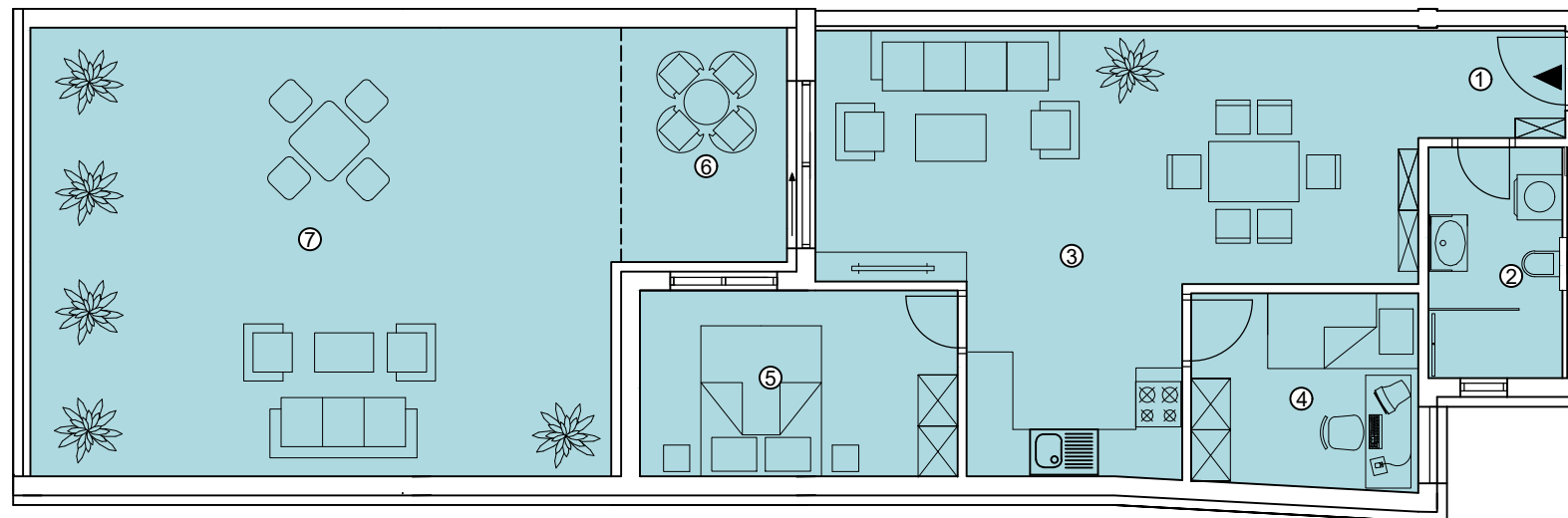
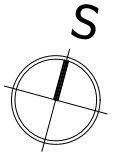


LAMELA A

1. KAT

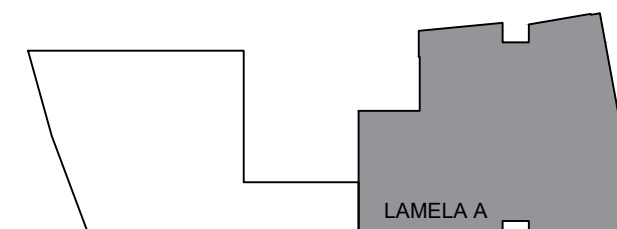
MJ 1:100

STAN 7A

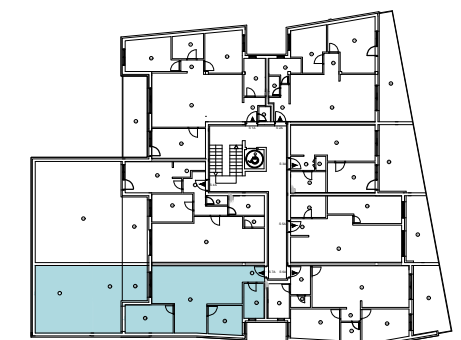


STAN 7A		
1	HODNIK	2,78 m ²
2	KUPAONICA	5,42 m ²
3	KUHINJA, BLAGOVAONICA I DNEVNI BORAVAK	34,18 m ²
4	SOBA	7,75 m ²
5	SOBA	10,40 m ²
UKUPNO STAN 7A		60,53 m ²
6	LODA	6,84 m ²
7	TERASA	46,33 m ²
SVEUKUPNO STAN 7A		113,70 m ²

POZICIJA ZGRADE



POZICIJA STANA 7A

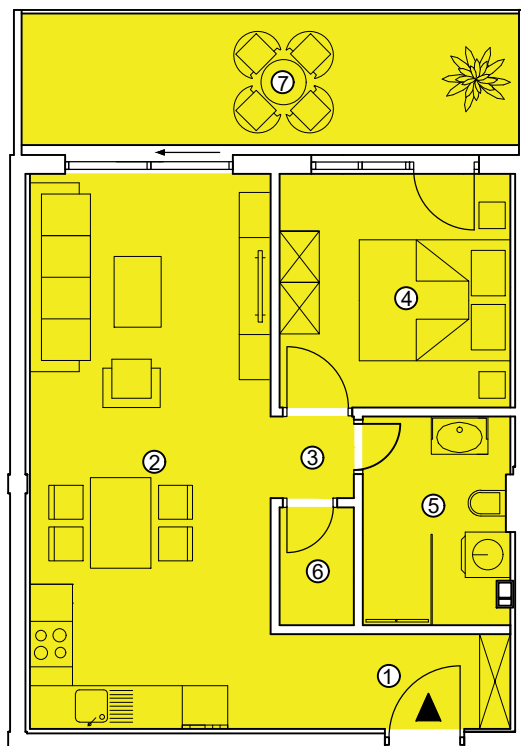
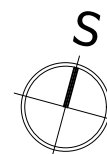


LAMELA B

1. KAT

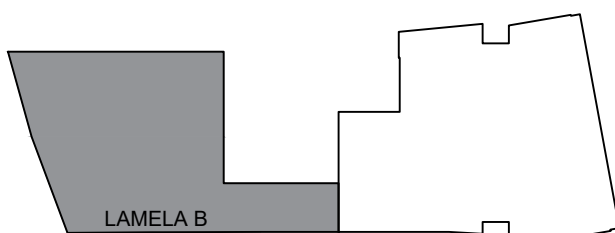
MJ 1:100

STAN 1B

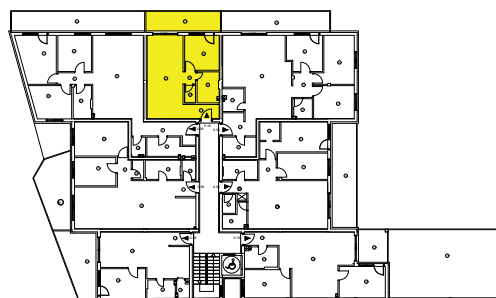


STAN 1B		
1	HODNIK	3,97 m ²
2	DNEVNI BORAVAK, KUHINJA I BLAGOVAONICA	23,36m ²
3	DEGAŽMAN	1,19 m ²
4	SOBA	9,43 m ²
5	KUPAONICA	5,27 m ²
6	OSTAVA	1,53 m ²
UKUPNO STAN 1B		44,75 m ²
7	LOĐA	11,44 m ²
SVEUKUPNO STAN 1B		56,19 m ²

POZICIJA ZGRADE



POZICIJA STANA 1B

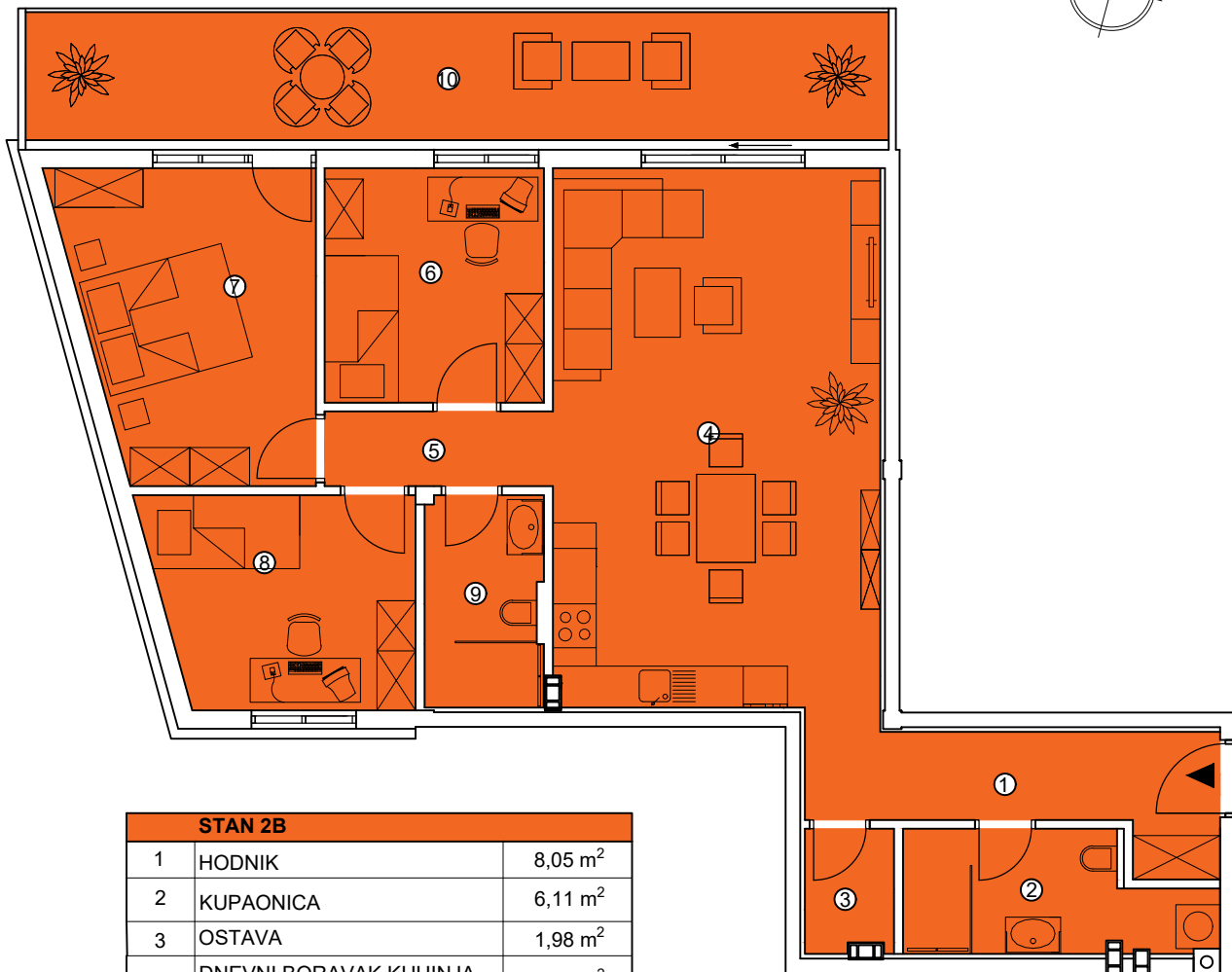


LAMELA B

1. KAT

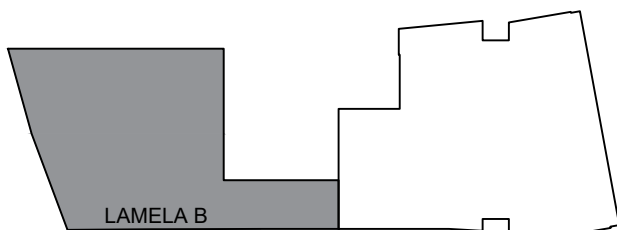
MJ 1:100

STAN 2B



STAN 2B		
1	HODNIK	8,05 m ²
2	KUPAONICA	6,11 m ²
3	OSTAVA	1,98 m ²
4	DNEVNI BORAVAK, KUHINJA I BLAGOVAONICA	32,62 m ²
5	DEGAŽMAN	3,15 m ²
6	SOBA	9,51 m ²
7	SOBA	13,50 m ²
8	SOBA	10,07 m ²
9	KUPAONICA	4,59 m ²
UKUPNO STAN 2B		89,58 m ²
10	LOĐA	20,40 m ²
SVEUKUPNO STAN 2B		109,98 m ²

POZICIJA ZGRADE



POZICIJA STANA 2B

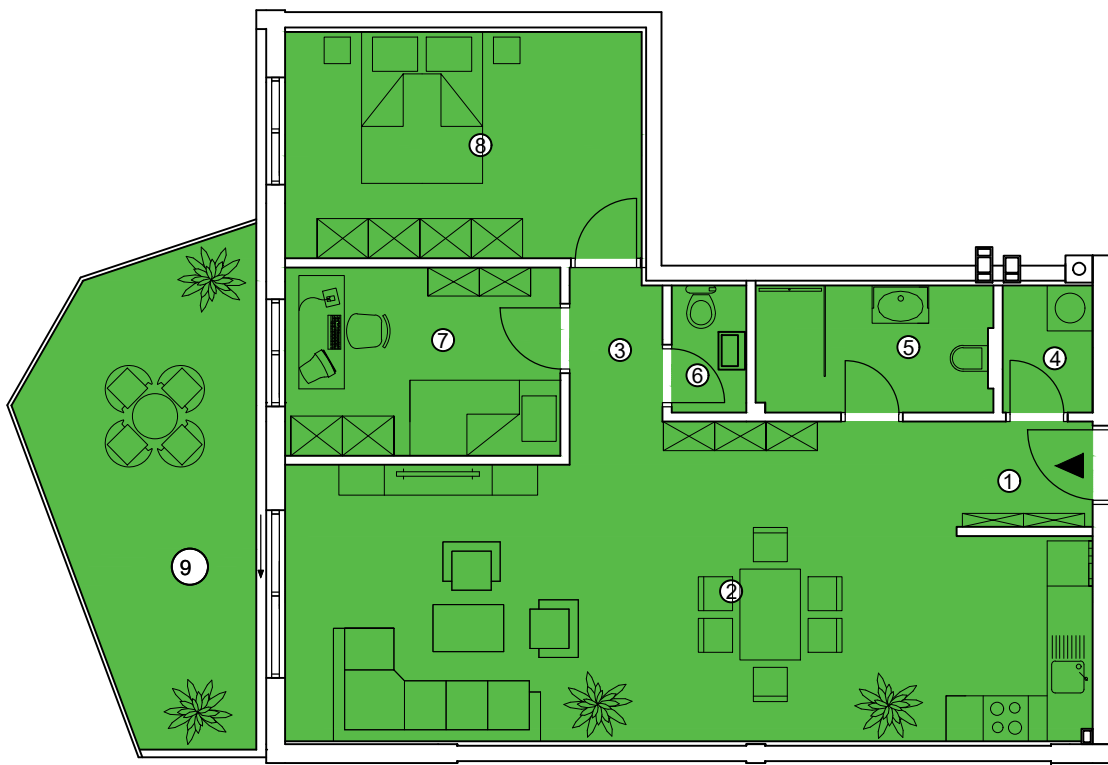
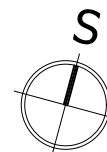


LAMELA B

1. KAT

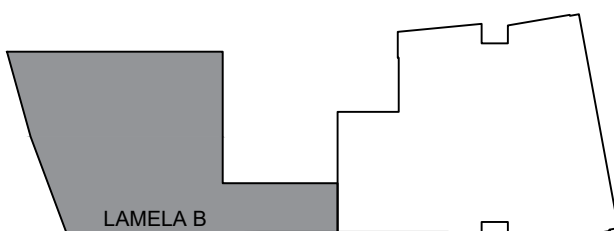
MJ 1:100

STAN 3B

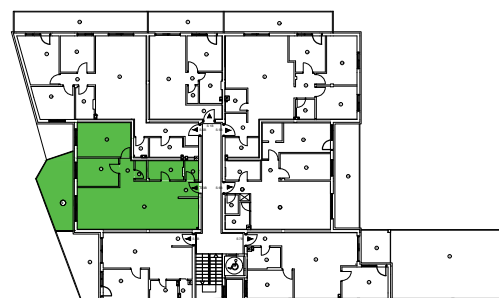


STAN 3B		
1	HODNIK	2,51 m ²
2	KUHINJA, BLAGOVAONICA I DNEVNI BORAVAK	40,26 m ²
3	DEGAŽMAN	2,44 m ²
4	OSTAVA	2,00 m ²
5	KUPAONICA	5,21 m ²
6	WC	1,66 m ²
7	SOBA	9,08 m ²
8	SOBA	14,12 m ²
UKUPNO STAN 3B		77,28 m ²
9	BALKON	16,32 m ²
SVEUKUPNO STAN 3B		93,60 m ²

POZICIJA ZGRADE



POZICIJA STANA 3B

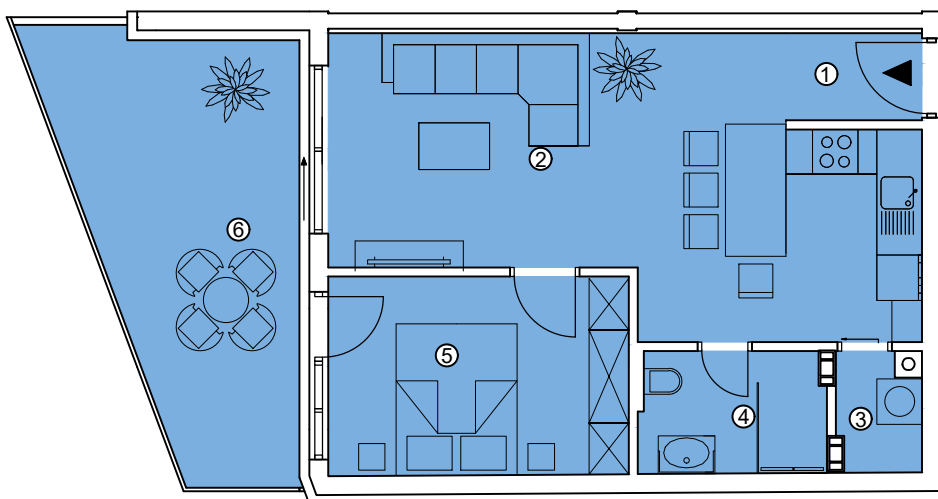


LAMELA B

1. KAT

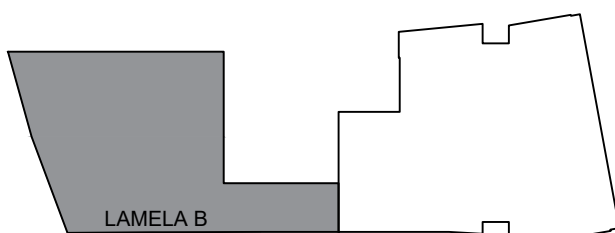
MJ 1:100

STAN 4B

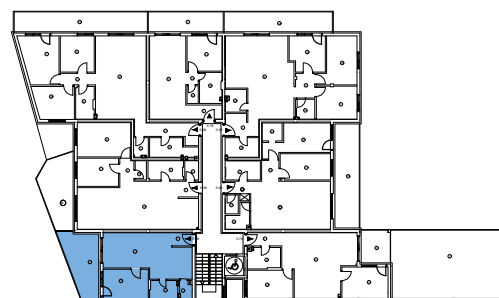


STAN 4B		
1	HODNIK	2,07 m ²
2	KUHINJA, BLAGOVAONICA I DNEVNI BORAVAK	25,76 m ²
3	OSTAVA	1,65 m ²
4	KUPAONICA	3,93 m ²
5	SOBA	10,44 m ²
UKUPNO STAN 4B		43,85 m²
6	BALKON	15,70 m ²
SVEUKUPNO STAN 4B		59,55 m²

POZICIJA ZGRADE



POZICIJA STANA 4B

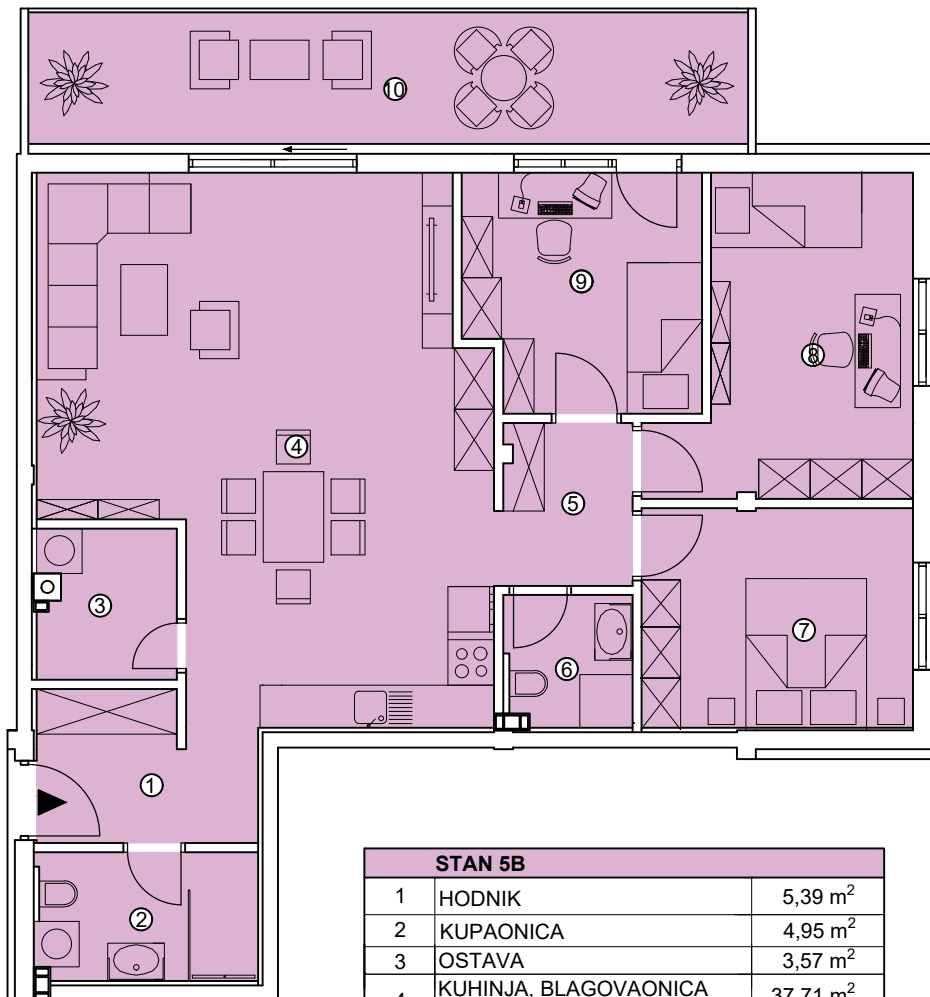


LAMELA B

1. KAT

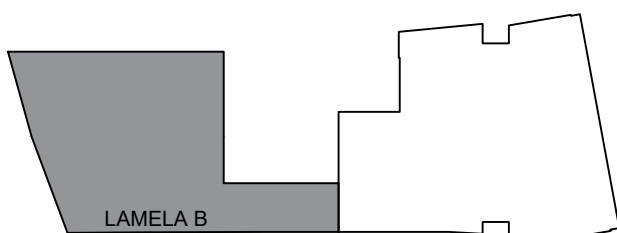
MJ 1:100

STAN 5B

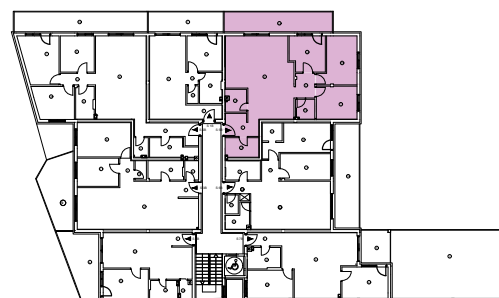


STAN 5B		
1	HODNIK	5,39 m ²
2	KUPAONICA	4,95 m ²
3	OSTAVA	3,57 m ²
4	KUHINJA, BLAGOVAONICA I DNEVNI BORAVAK	37,71 m ²
5	DEGAŽMAN	3,77 m ²
6	WC	2,87 m ²
7	SOBA	10,42 m ²
8	SOBA	12,43 m ²
9	SOBA	9,60 m ²
UKUPNO STAN 5B		90,71 m²
10	LOĐA	16,57 m ²
SVEUKUPNO STAN 5B		107,28 m²

POZICIJA ZGRADE



POZICIJA STANA 5B

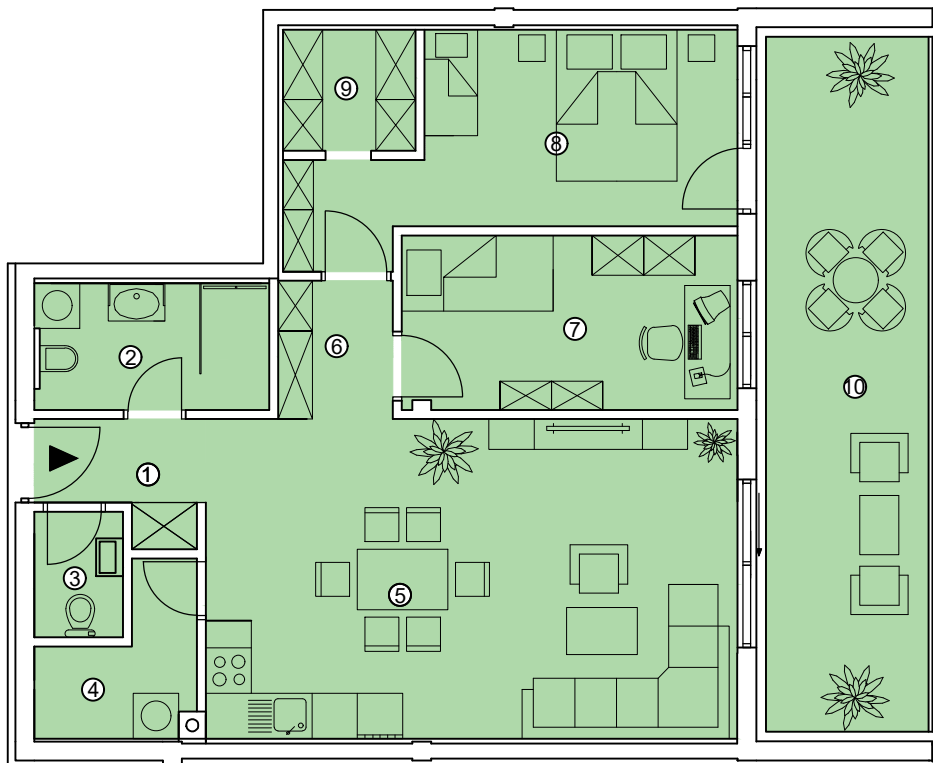


LAMELA B

1. KAT

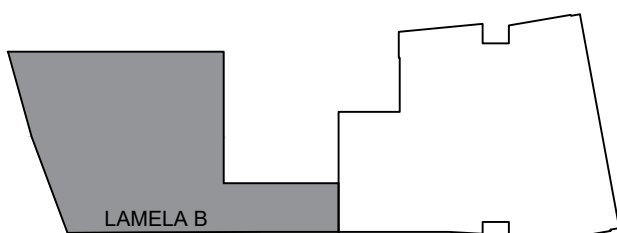
MJ 1:100

STAN 6B

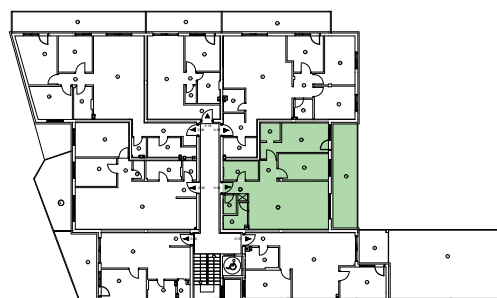


STAN 6B		
1	HODNIK	3,04 m ²
2	KUPAONICA	5,16 m ²
3	WC	1,95 m ²
4	OSTAVA	3,54 m ²
5	KUHINJA, BLAGAVAONICA I DNEVNI BORAVAK	29,71 m ²
6	DEGAŽMAN	2,77 m ²
7	SOBA	10,21 m ²
8	SOBA	13,26 m ²
9	GARDEROBA	2,80 m ²
UKUPNO STAN 6B		72,44 m²
10	LOĐA	19,76 m ²
SVEUKUPNO STAN 6B		92,20 m²

POZICIJA ZGRADE



POZICIJA STANA 6B

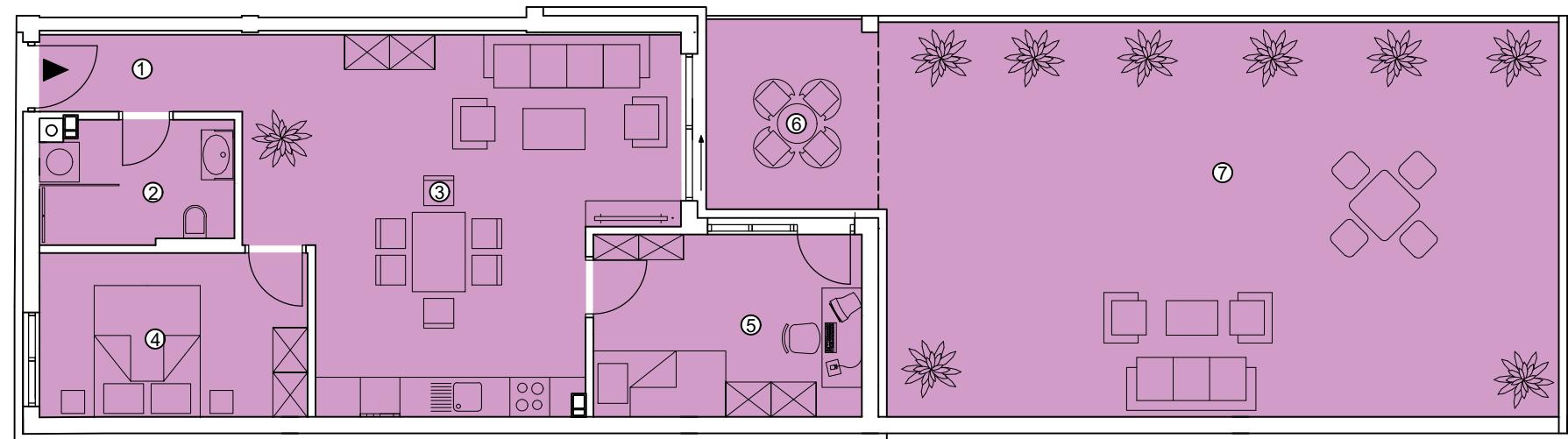
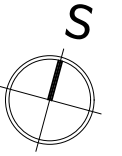


LAMELA B

1. KAT

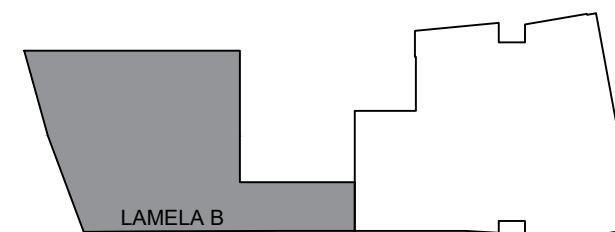
MJ 1:100

STAN 7B

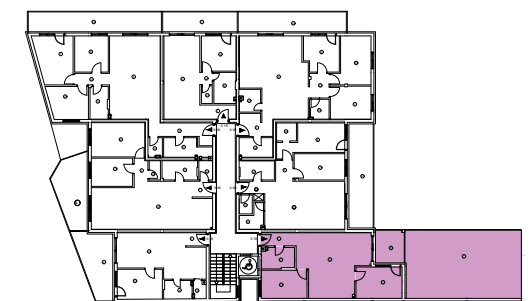



STAN 7B		
1	HODNIK	3,56 m ²
2	KUPAONICA	5,26 m ²
3	KUHINJA, BLAGAVAONICA I DNEVNI BORAVAK	31,11 m ²
4	SOBA	10,01 m ²
5	SOBA	11,15 m ²
UKUPNO STAN 7B		61,09m²
6	NATKRIVENA TERASA	7,42 m ²
7	NENATKRIVENA TERASA	60,77 m ²
SVEUKUPNO STAN 7B		129,28 m²

POZICIJA ZGRADE



POZICIJA STANA 7B





STAMBENO POSLOVNA ZGRADA,
ĐAKOVO, A. STARČEVIĆA 7
DRAGIĆ NEKRETNINE d.o.o.

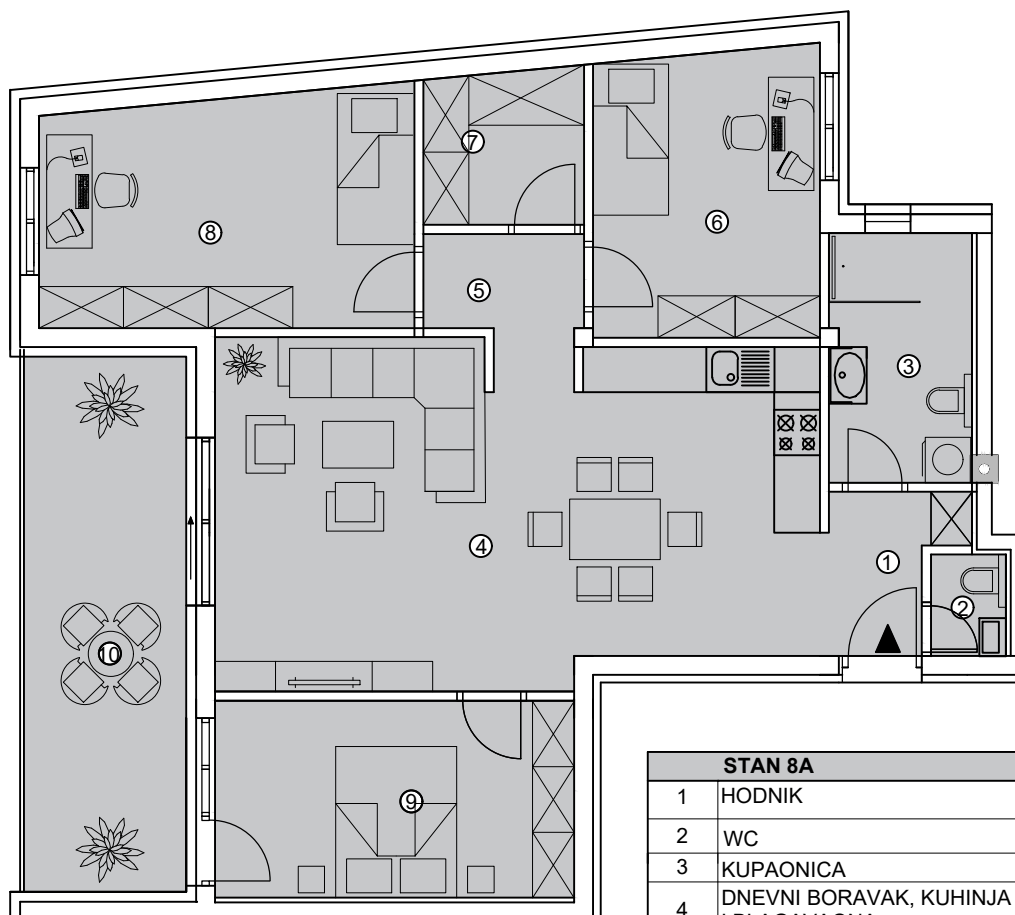
2. KAT

LAMELA A

2. KAT

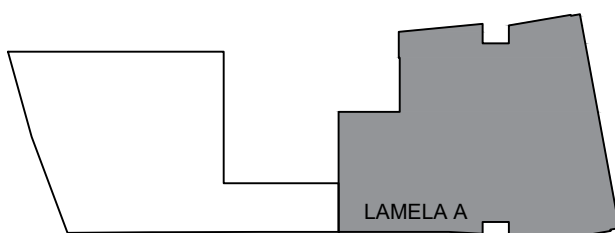
MJ 1:100

STAN 8A

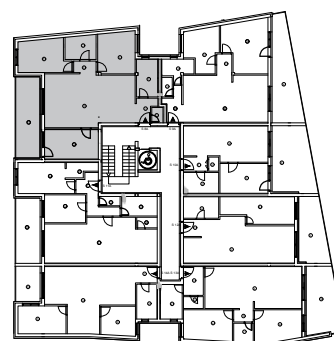


STAN 8A		
1	HODNIK	3,34 m ²
2	WC	1,33 m ²
3	KUPAONICA	6,21 m ²
4	DNEVNI BORAVAK, KUHINJA I BLAGAVAONA	35,52 m ²
5	DEGAŽMAN	2,64 m ²
6	SOBA	11,29 m ²
7	OSTAVA	4,29 m ²
8	SOBA	15,08 m ²
9	SOBA	12,39 m ²
UKUPNO STAN 8A		92,09 m²
10	LOĐA	15,22 m ²
SVEUKUPNO STAN 8A		107,31 m²

POZICIJA ZGRADE



POZICIJA STANA 8A

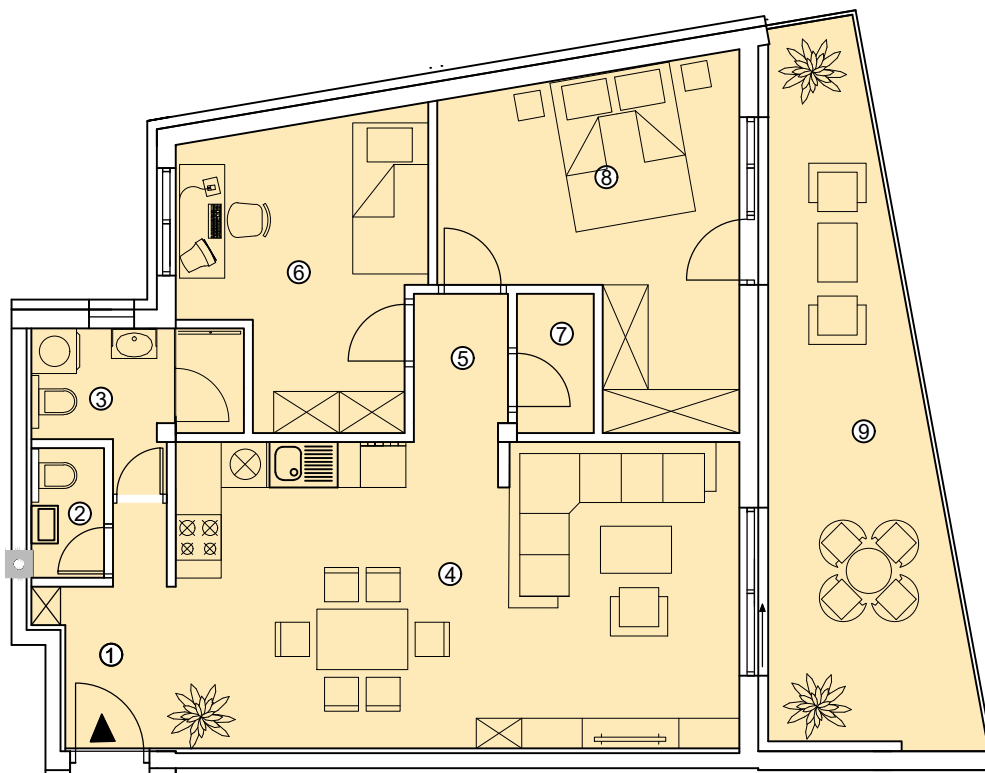


LAMELA A

2. KAT

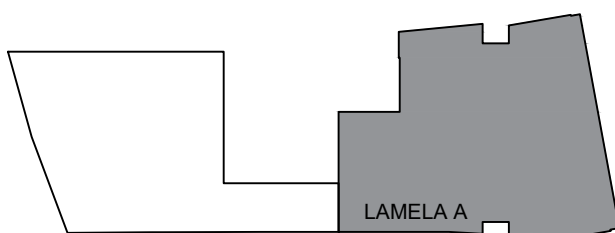
MJ 1:100

STAN 9A

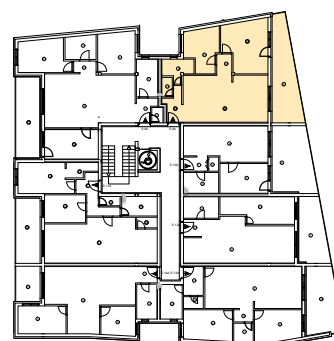


STAN 9A		
1	HODNIK	4,14 m ²
2	WC	1,64 m ²
3	KUPAONICA	4,51 m ²
4	DNEVNI BORAVAK, KUHINJA I BLAGOVAONICA	30,11 m ²
5	DEGAŽMAN	2,41 m ²
6	SOBA	11,52 m ²
7	OSTAVA	1,87 m ²
8	SOBA	14,63 m ²
UKUPNO STAN 9A		70,83 m ²
9	TERASA	19,32 m ²
SVEUKUPNO STAN 9A		90,15 m ²

POZICIJA ZGRADE



POZICIJA STANA 9A

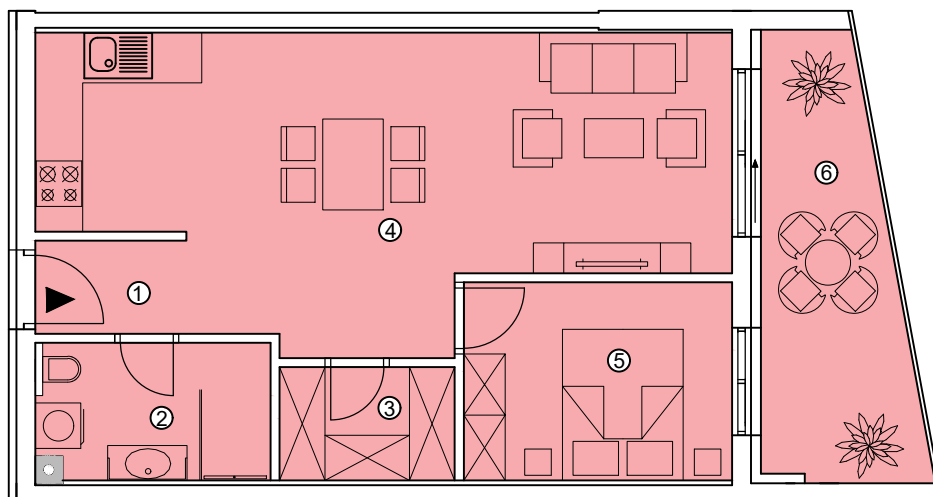
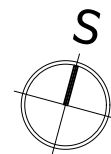


LAMELA A

2. KAT

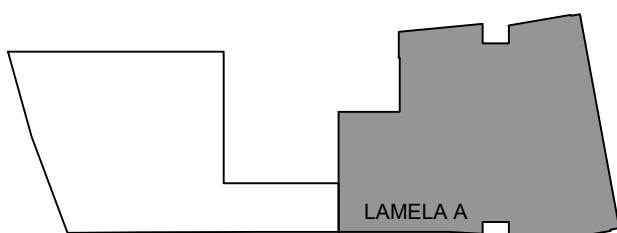
MJ 1:100

STAN 10A

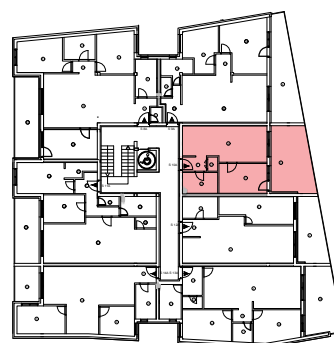


STAN 10A		
1	HODNIK	2,46 m ²
2	KUPAONICA	5,49 m ²
3	OSTAVA	3,47 m ²
4	DNEVNI BORAVAK, KUHINJA I BLAGOVAONICA	31,83 m ²
5	SOBA	9,31 m ²
UKUPNO STAN 10A		52,56 m ²
6	LOĐA	10,45 m ²
SVEUKUPNO STAN 10A		63,01 m ²

POZICIJA ZGRADE



POZICIJA STANA 10A

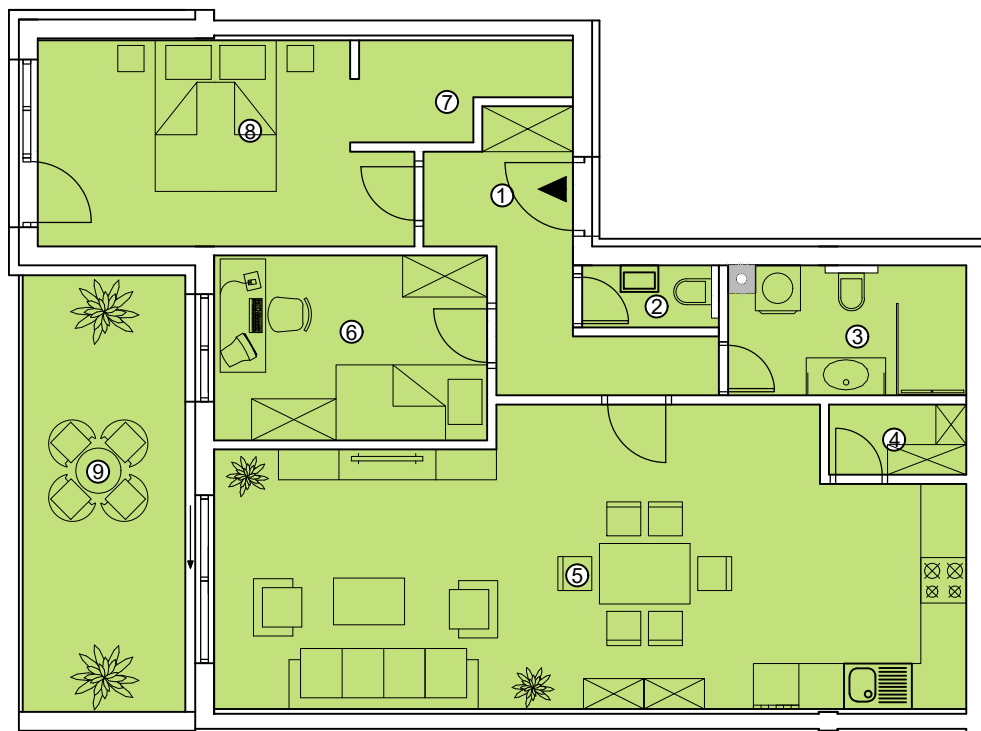
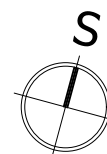


LAMELA A

2. KAT

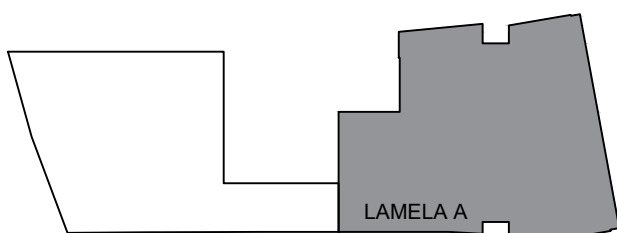
MJ 1:100

STAN 11A

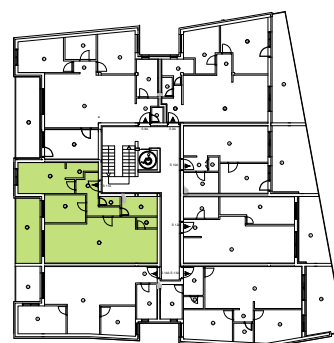


STAN 11A		
1	HODNIK	6,70 m ²
2	WC	1,42 m ²
3	KUPAONICA	5,22 m ²
4	OSTAVA	1,69 m ²
5	KUHINJA,BLAGOVAONICA I DNEVNI BORAVAK	35,82 m ²
6	SOBA	8,84 m ²
7	GARDEROBA	3,14 m ²
8	SOBA	12,33 m ²
UKUPNO STAN 11A		75,16 m²
9	LOĐA	12,42 m ²
SVEUKUPNO STAN 11A		87,58 m²

POZICIJA ZGRADE



POZICIJA STANA 11A

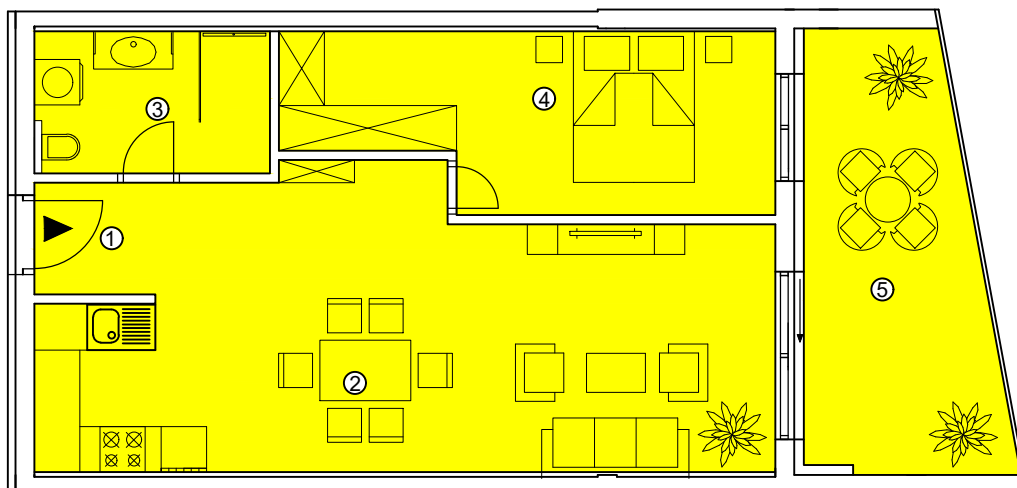
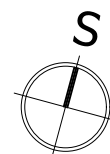


LAMELA A

2. KAT

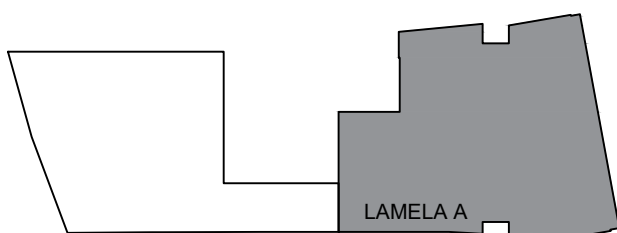
MJ 1:100

STAN 12A

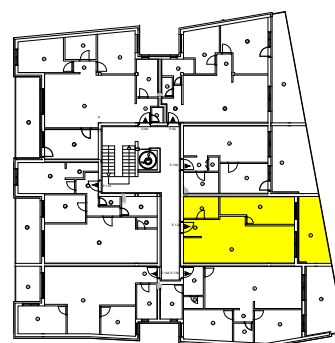


STAN 12A		
1	HODNIK	2,37 m ²
2	KUHINJA, BLAGOVAONICA I DNEVNI BORAVAK	33,24 m ²
3	KUPAONICA	5,80 m ²
4	SOBA	13,97 m ²
UKUPNO STAN 12A		55,38 m²
5	LOBA	13,62 m ²
SVEUKUPNO STAN 12A		69,00 m²

POZICIJA ZGRADE



POZICIJA STANA 12A

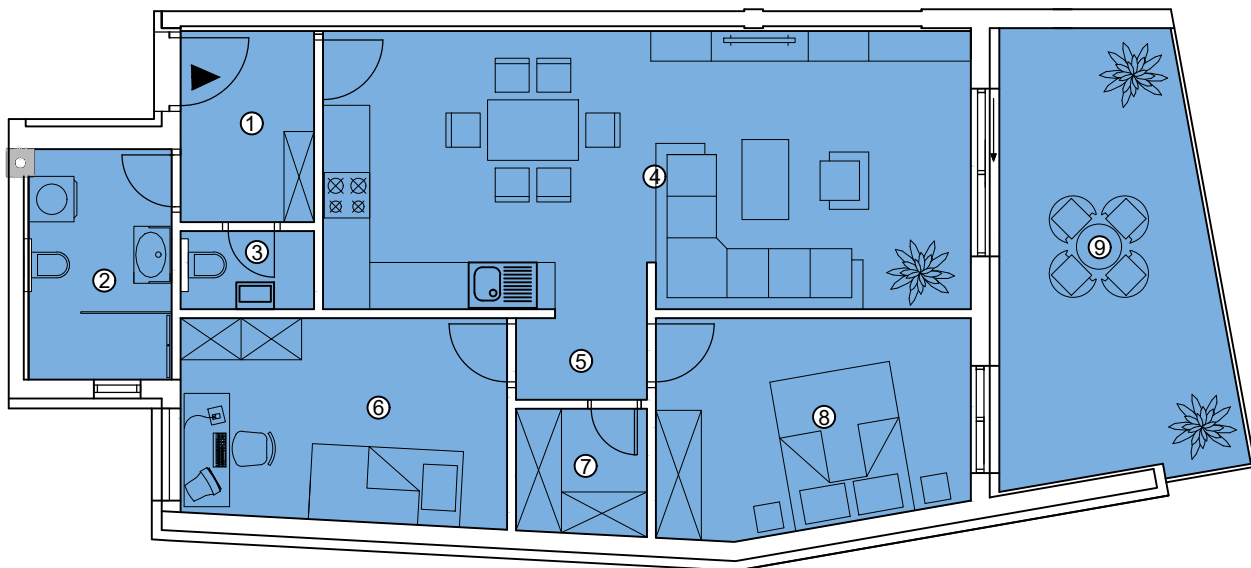
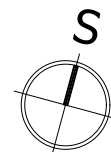


LAMELA A

2. KAT

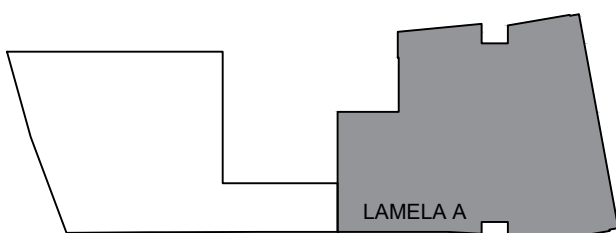
MJ 1:100

STAN 13A

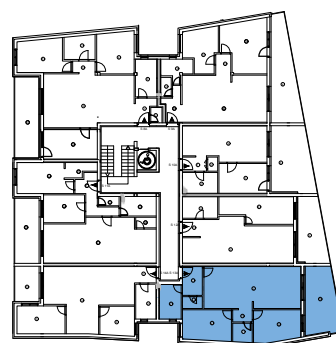


STAN 13A		
1	HODNIK	4,46 m ²
2	KUPAONICA	5,72 m ²
3	WC	1,75 m ²
4	KUHINJA,BLAGOVAONICA I DNEVNI BORAVAK	31,43 m ²
5	DEGAŽMAN	2,01 m ²
6	SOBA	11,58 m ²
7	OSTAVA	2,86 m ²
8	SOBA	11,45 m ²
UKUPNO STAN 13A		71,26 m ²
9	LOĐA	16,62 m ²
SVEUKUPNO STAN 13A		87,88 m ²

POZICIJA ZGRADE



POZICIJA STANA 13A

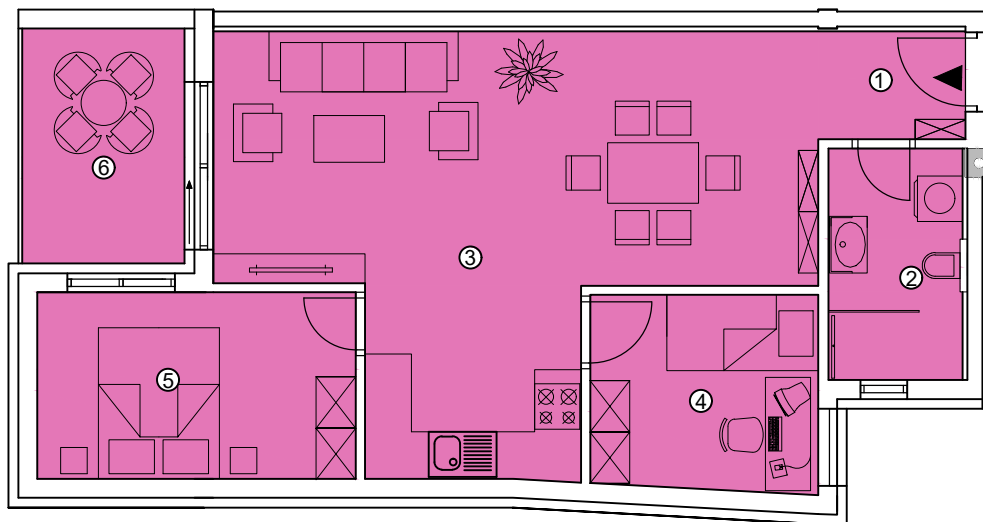
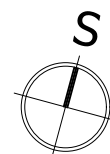


LAMELA A

2. KAT

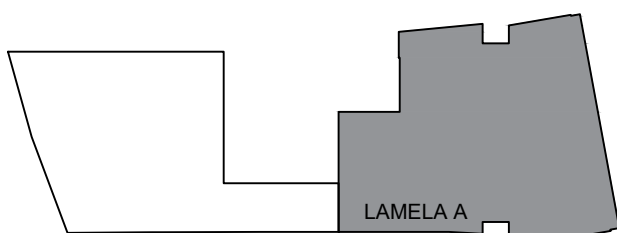
MJ 1:100

STAN 14A

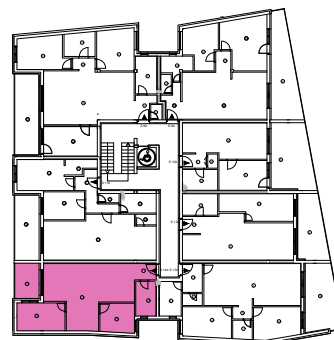


STAN 14A		
1	HODNIK	2,78 m ²
2	KUPAONICA	5,42 m ²
3	KUHINJA,BLAGOVAONICA I DNEVNI BORAVAK	34,18 m ²
4	SOBA	7,75 m ²
5	SOBA	10,40 m ²
UKUPNO STAN 14A		60,53 m ²
6	LOĐA	6,68 m ²
SVEUKUPNO STAN 14A		67,21 m ²

POZICIJA ZGRADE



POZICIJA STANA 14A

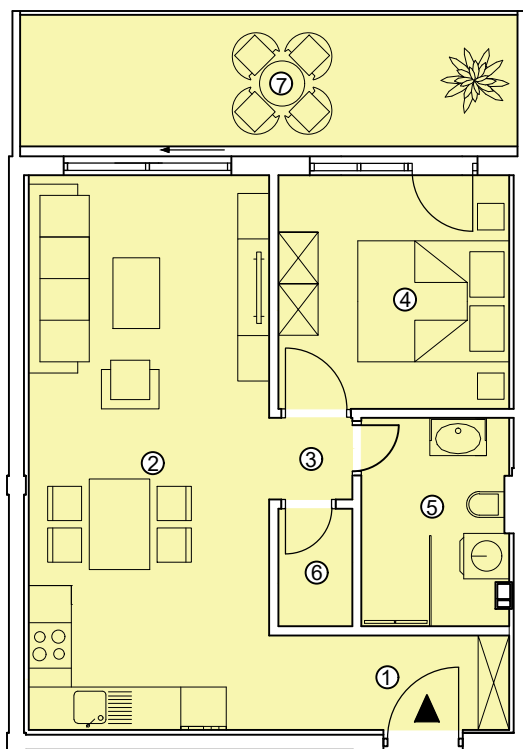
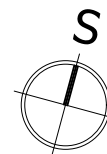


LAMELA B

2. KAT

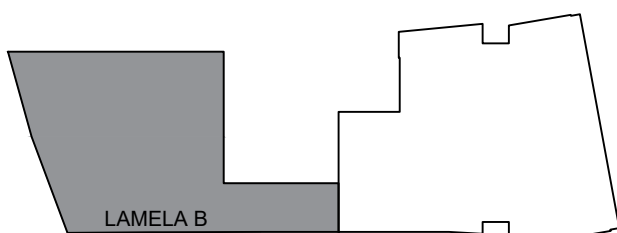
MJ 1:100

STAN 8B

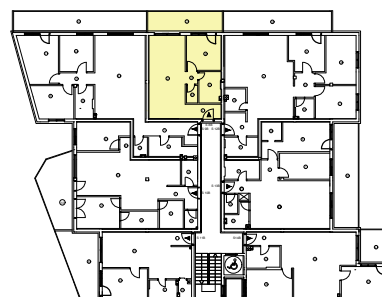


STAN 8B		
1	HODNIK	3,97 m ²
2	DNEVNI BORAVAK, KUHINJA I BLAGOVAONICA	23,36m ²
3	DEGAŽMAN	1,19 m ²
4	SOBA	9,43 m ²
5	KUPAONICA	5,27 m ²
6	OSTAVA	1,53 m ²
UKUPNO STAN 8B		44,75 m²
7	BALKON	11,44 m ²
SVEUKUPNO STAN 8B		56,19 m²

POZICIJA ZGRADE



POZICIJA STANA 8B

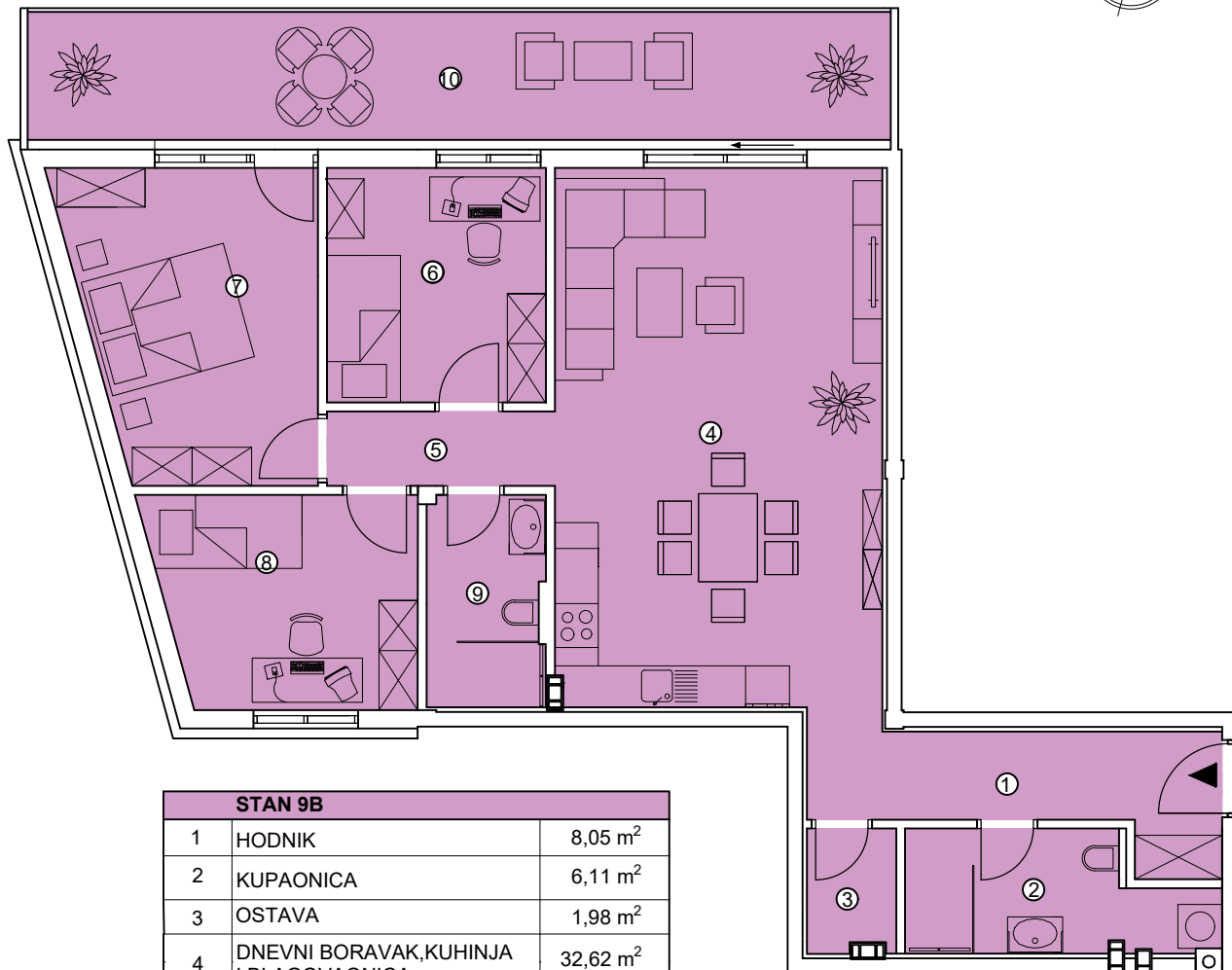


LAMELA B

2. KAT

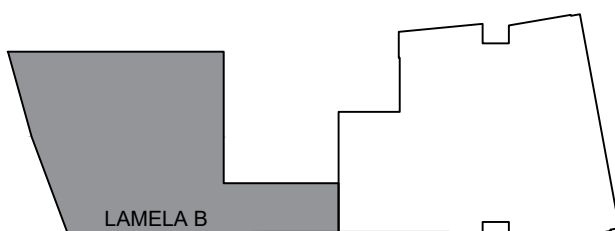
MJ 1:100

STAN 9B

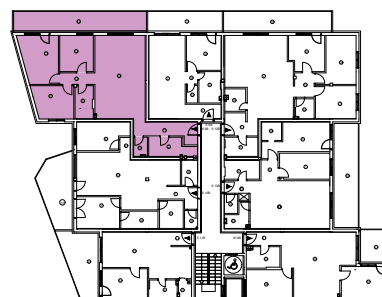


STAN 9B		
1	HODNIK	8,05 m ²
2	KUPAONICA	6,11 m ²
3	OSTAVA	1,98 m ²
4	DNEVNI BORAVAK, KUHINJA I BLAGOVAONICA	32,62 m ²
5	DEGAŽMAN	3,15 m ²
6	SOBA	9,51 m ²
7	SOBA	13,50 m ²
8	SOBA	10,07 m ²
9	KUPAONICA	4,59 m ²
UKUPNO STAN 9B		89,58 m²
10	BALKON	20,40 m ²
SVEUKUPNO STAN 9B		109,98 m²

POZICIJA ZGRADE



POZICIJA STANA 9B

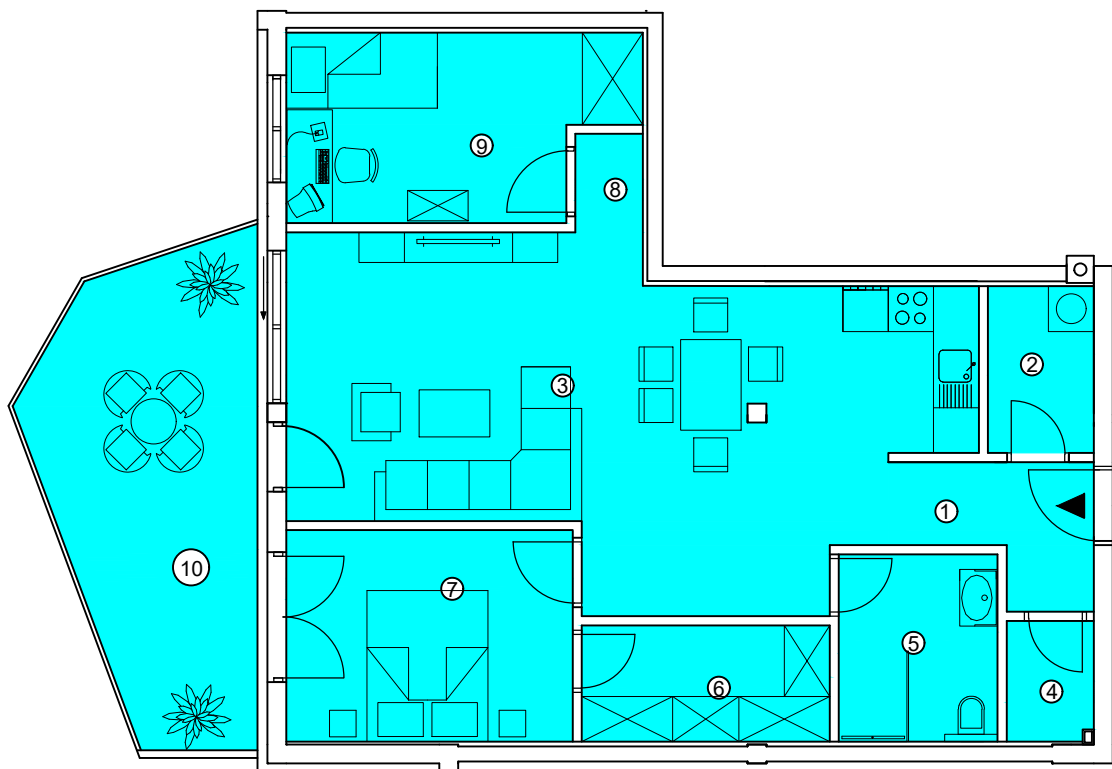
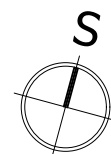


LAMELA B

2. KAT

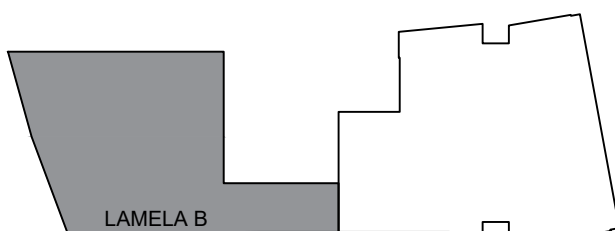
MJ 1:100

STAN 10B



STAN 10B		
1	HODNIK	4,01 m ²
2	OSTAVA	3,09 m ²
3	KUHINJA, BLAGOVAONICA I DNEVNI BORAVAK	35,08 m ²
4	WC	1,82 m ²
5	KUPAONICA	5,21 m ²
6	GARDEROBA	5,05 m ²
7	SOBA	10,61 m ²
8	DEGAŽMAN	1,16 m ²
9	SOBA	10,57 m ²
UKUPNO STAN 10B		76,60 m ²
10	BALKON	16,32 m ²
SVEUKUPNO STAN 10B		92,92 m ²

POZICIJA ZGRADE



POZICIJA STANA 10B

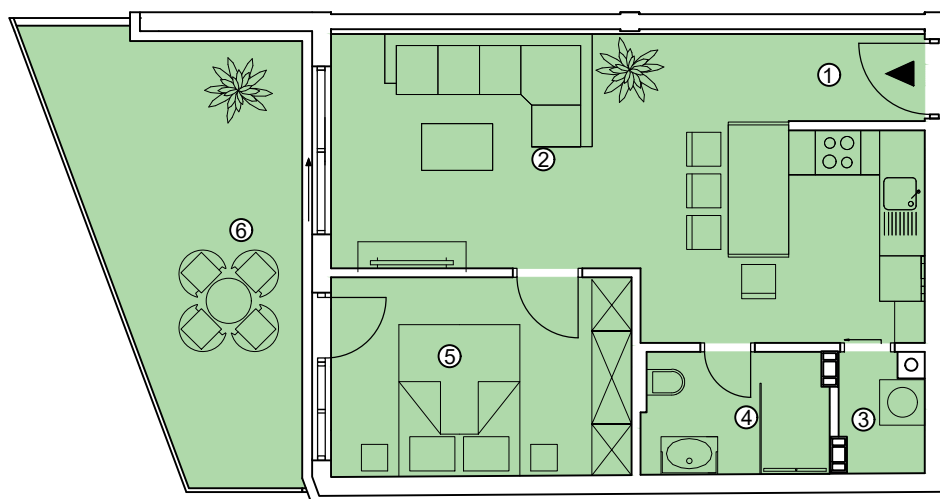
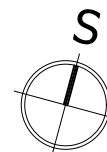


LAMELA B

2. KAT

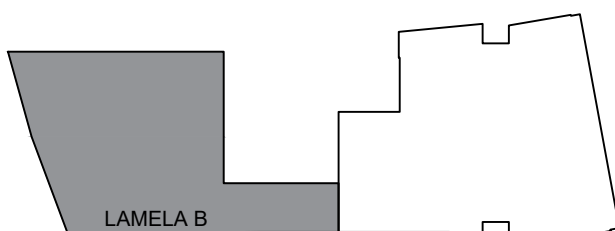
MJ 1:100

STAN 11B



STAN 11B		
1	HODNIK	2,07 m ²
2	KUHINJA, BLAGOVAONICA I DNEVNI BORAVAK	25,76 m ²
3	OSTAVA	1,65 m ²
4	KUPAONICA	3,93 m ²
5	SOBA	10,44 m ²
UKUPNO STAN 11B		43,85 m²
6	BALKON	15,70 m ²
SVEUKUPNO STAN 11B		59,55 m²

POZICIJA ZGRADE



POZICIJA STANA 11B

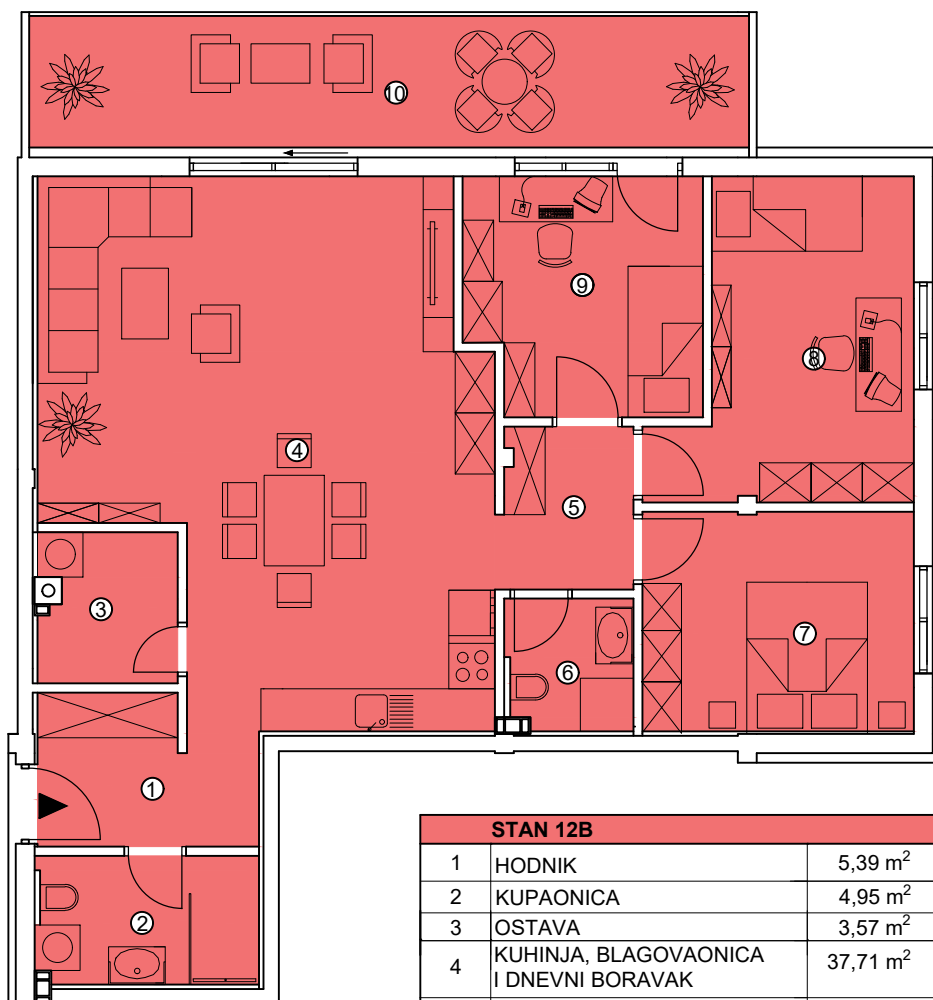
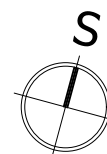


LAMELA B

2. KAT

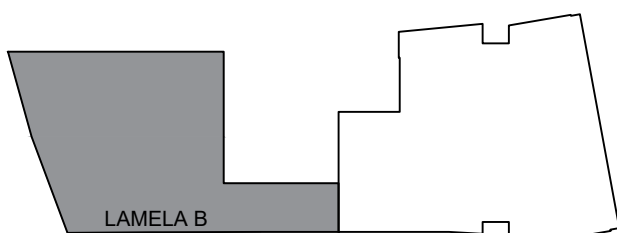
MJ 1:100

STAN 12B

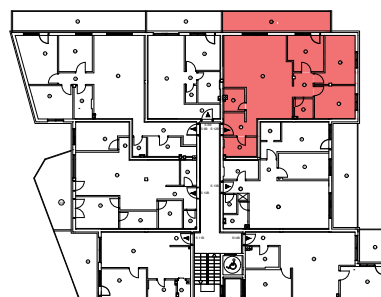


STAN 12B		
1	HODNIK	5,39 m ²
2	KUPAONICA	4,95 m ²
3	OSTAVA	3,57 m ²
4	KUHINJA, BLAGOVAONICA I DNEVNI BORAVAK	37,71 m ²
5	DEGAŽMAN	3,77 m ²
6	WC	2,87 m ²
7	SOBA	10,42 m ²
8	SOBA	12,43 m ²
9	SOBA	9,60 m ²
UKUPNO STAN 12B		90,71 m²
10	BALKON	16,57 m ²
SVEUKUPNO STAN 12B		107,28 m²

POZICIJA ZGRADE



POZICIJA STANA 12B

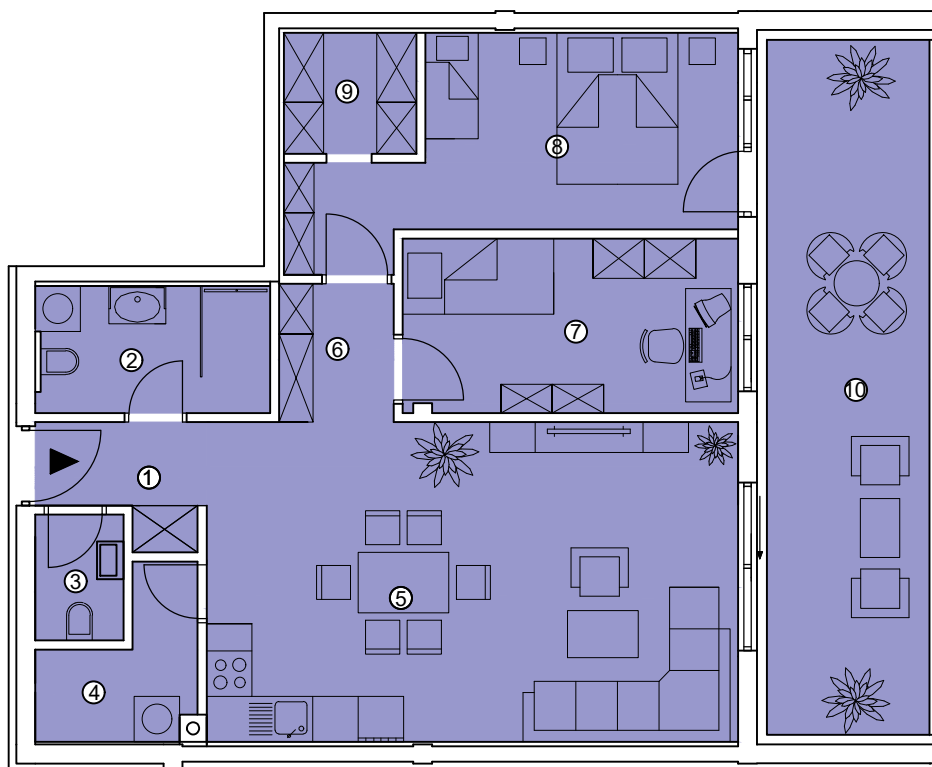


LAMELA B

2. KAT

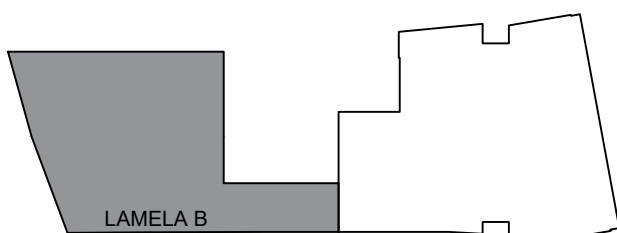
MJ 1:100

STAN 13B

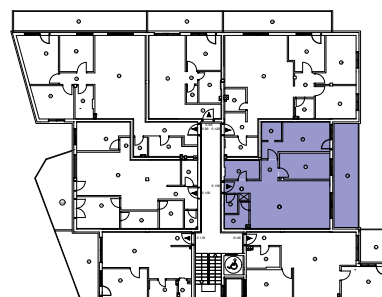


STAN 13B		
1	HODNIK	3,04 m ²
2	KUPAONICA	5,16 m ²
3	WC	1,95 m ²
4	OSTAVA	3,54 m ²
5	KUHINJA, BLAGAVAONICA I DNEVNI BORAVAK	29,71 m ²
6	DEGAŽMAN	2,77 m ²
7	SOBA	10,21 m ²
8	SOBA	13,26 m ²
9	GARDEROBA	2,80 m ²
UKUPNO STAN 13B		72,44 m ²
10	LOĐA	19,76 m ²
SVEUKUPNO STAN 13B		92,20 m ²

POZICIJA ZGRADE



POZICIJA STANA 13B

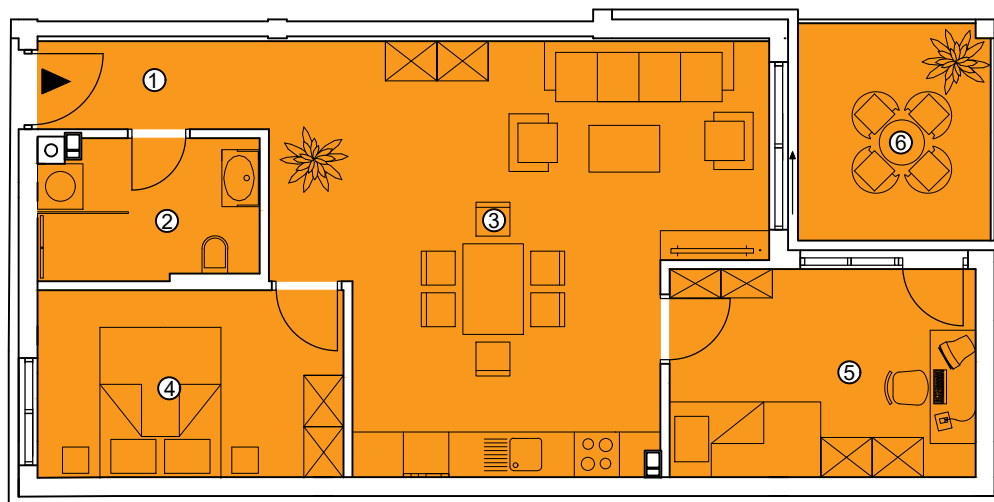
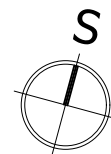


LAMELA B

2. KAT

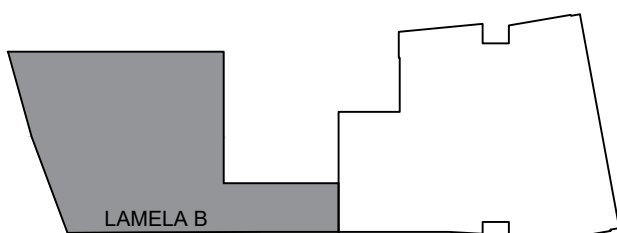
MJ 1:100

STAN 14B



STAN 14B		
1	HODNIK	3,56 m ²
2	KUPAONICA	5,26 m ²
3	KUHINJA, BLAGAVAONICA I DNEVNI BORAVAK	31,11 m ²
4	SOBA	10,01 m ²
5	SOBA	11,15 m ²
UKUPNO STAN 14B		61,09m ²
6	TERASA	7,29 m ²
SVEUKUPNO STAN 14B		68,38 m ²

POZICIJA ZGRADE



POZICIJA STANA 14B

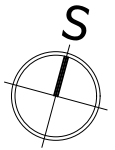


STAMBENO POSLOVNA ZGRADA,
ĐAKOVO, A. STARČEVIĆA 7
DRAGIĆ NEKRETNINE d.o.o.

POTKROVLJE

POTKROVLJE
TLORIS

MJ 1:250



LAMELA B



LAMELA A

LAMELA B Potkrovlje - iskaz neto površina		
Broj	Prostorija	Površina
STAN 15B		
1	HODNIK	3,56 m ²
2	KUPAONICA	5,26 m ²
3	KUHINJA, BLAGAVAONICA I DNEVNI BORAVAK	31,11 m ²
4	SOBA	10,01 m ²
5	SOBA	11,15 m ²
UKUPNO STAN 15B		61,09 m²
6	TERASA	7,29 m ²
SVEUKUPNO STAN 15B		68,38 m²
STAN 16B		
1	HODNIK	7,36 m ²
2	WC	2,08 m ²
3	KUPAONICA	4,97 m ²
4	SOBA	11,78 m ²
5	SOBA	9,48 m ²
6	DNEVNI BORAVAK, KUHINJA I BLAGAVAONA	28,70 m ²
7	OSTAVA	1,33 m ²
UKUPNO STAN 16B		65,70 m²
8	TERASA	93,46 m ²
SVEUKUPNO STAN 16B		159,16 m²

LAMELA B Potkrovlje - iskaz neto površina		
Broj	Prostorija	Površina
STAN 17B		
1	HODNIK	12,55 m ²
2	KUPAONICA	5,48 m ²
3	WC	2,41 m ²
4	OSTAVA	1,73 m ²
5	KUHINJA, BLAGAVAONICA I DNEVNI BORAVAK	45,44 m ²
6	SOBA	13,19 m ²
7	SOBA	11,11 m ²
8	SOBA	11,48 m ²
UKUPNO STAN 17B		103,39 m²
9	TERASA	8,84 m ²
SVEUKUPNO STAN 17B		112,23 m²
STAN 18B		
1	HODNIK	2,64 m ²
2	OSTAVA	1,50 m ²
3	KUPAONICA	5,25 m ²
4	SOBA	8,37 m ²
5	KUHINJA, BLAGAVAONICA I DNEVNI BORAVAK	31,36 m ²
UKUPNO STAN 18B		49,12 m²
6	TERASA	15,70 m ²
SVEUKUPNO STAN 18B		64,82 m²

LAMELA B Potkrovlje - iskaz neto površina		
Broj	Prostorija	Površina
STAN 19B		
1	HODNIK	8,42 m ²
2	WC	2,11 m ²
3	KUPAONICA	6,26 m ²
4	OSTAVA	2,68 m ²
5	SOBA	14,68 m ²
6	SOBA	11,00 m ²
7	KUHINJA, BLAGAVAONICA I DNEVNI BORAVAK	30,51 m ²
8	OSTAVA	1,99 m ²
UKUPNO STAN 19B		77,65 m²
9	LODA	9,30 m ²
10	TERASA	37,03 m ²
SVEUKUPNO STAN 19B		123,98 m²

ZAJEDNIČKI PROSTOR "LAMELA B"		
†	HODNIK I STUBIŠTE	31,07 m ²

LAMELA A Potkrovlje - iskaz neto površina		
Broj	Prostorija	Površina
STAN 15A		
1	HODNIK	3,34 m ²
2	WC	1,33 m ²
3	KUPAONICA	6,21 m ²
4	DNEVNI BORAVAK, KUHINJA I BLAGAVAONA	33,11 m ²
5	DEGAŽMAN	2,64 m ²
6	SOBA	11,29 m ²
7	OSTAVA	4,29 m ²
8	SOBA	15,08 m ²
UKUPNO STAN 15A		77,29 m²
9	LODA	8,51 m ²
SVEUKUPNO STAN 15A		85,80 m²
STAN 16A		
1	HODNIK	4,14 m ²
2	WC	1,64 m ²
3	KUPAONICA	4,51 m ²
4	DNEVNI BORAVAK, KUHINJA I BLAGAVAONICA	30,11 m ²
5	DEGAŽMAN	2,41 m ²
6	SOBA	11,52 m ²
7	OSTAVA	1,87 m ²
8	SOBA	14,63 m ²
UKUPNO STAN 16A		70,83 m²
9	TERASA	19,55 m ²
SVEUKUPNO STAN 16A		90,38 m²

LAMELA A Potkrovlje - iskaz neto površina		
Broj	Prostorija	Površina
STAN 17A		
1	HODNIK	12,63 m ²
2	WC	4,09 m ²
3	KUPAONICA	5,95 m ²
4	OSTAVA	2,13 m ²
5	SOBA	12,79 m ²
6	SOBA	11,86 m ²
7	DNEVNI BORAVAK, KUHINJA I BLAGAVAONA	45,17 m ²
8	SOBA	12,58 m ²
UKUPNO STAN 17A		107,20 m²
9	TERASA	135,97 m ²
SVEUKUPNO STAN 17A		243,17 m²
STAN 18A		
1	HODNIK	6,68 m ²
2	WC	1,42 m ²
3	KUPAONICA	5,31 m ²
4	OSTAVA	1,66 m ²
5	DNEVNI BORAVAK, KUHINJA I BLAGAVAONA	37,80 m ²
6	SOBA	8,50 m ²
7	SOBA	8,09 m ²
8	SOBA	14,69 m ²
UKUPNO STAN 18A		84,15 m²
9	NATKRIVENA TERASA	26,67 m ²
10	TERASA	70,89 m ²
SVEUKUPNO STAN 18A		181,71 m²

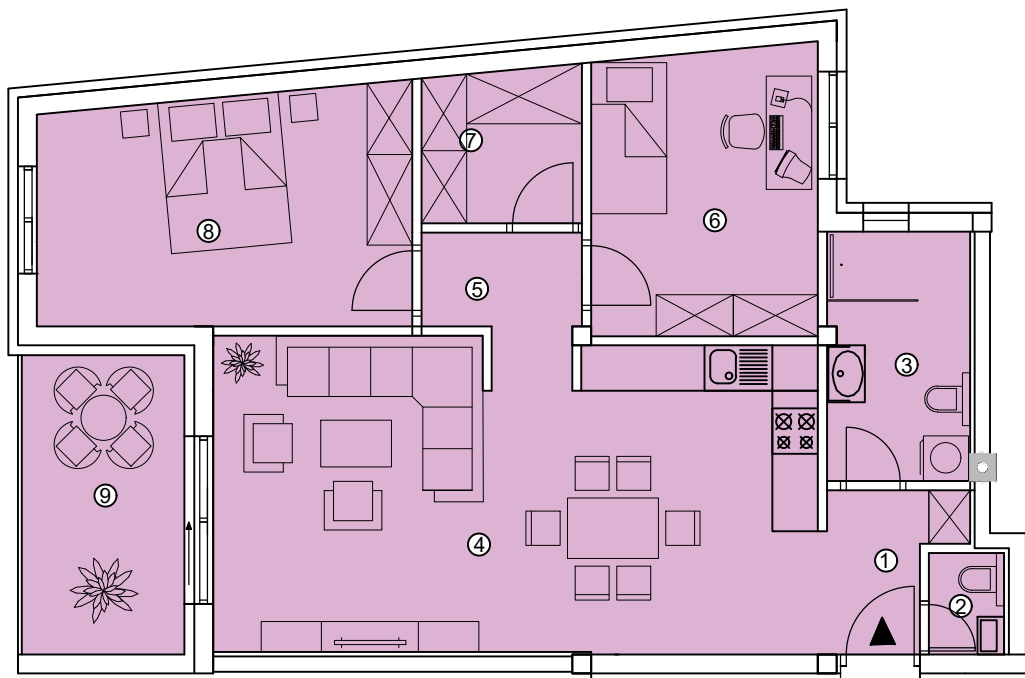
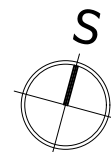
ZAJEDNIČKI PROSTOR "LAMELA A"		
†	HODNIK I STUBIŠTE	34,77 m ²

LAMELA A

POTKROVLJE

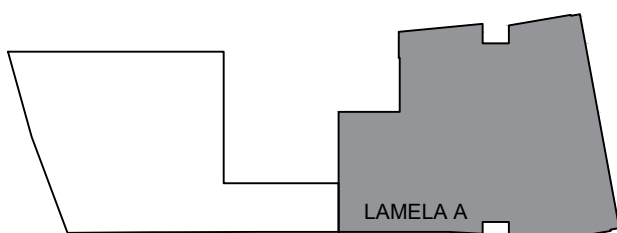
MJ 1:100

STAN 15A

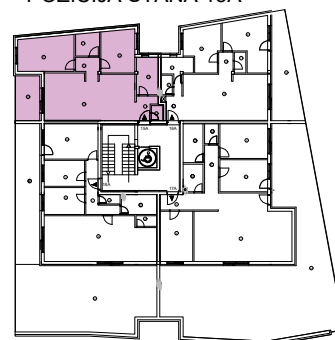


STAN 15A		
1	HODNIK	3,34 m ²
2	WC	1,33 m ²
3	KUPAONICA	6,21 m ²
4	DNEVNI BORAVAK, KUHINJA I BLAGAVAONA	33,11 m ²
5	DEGAŽMAN	2,64 m ²
6	SOBA	11,29 m ²
7	OSTAVA	4,29 m ²
8	SOBA	15,08 m ²
UKUPNO STAN 15A		77,29 m²
9	LOĐA	8,51 m ²
SVEUKUPNO STAN 15A		85,80 m²

POZICIJA ZGRADE



POZICIJA STANA 15A

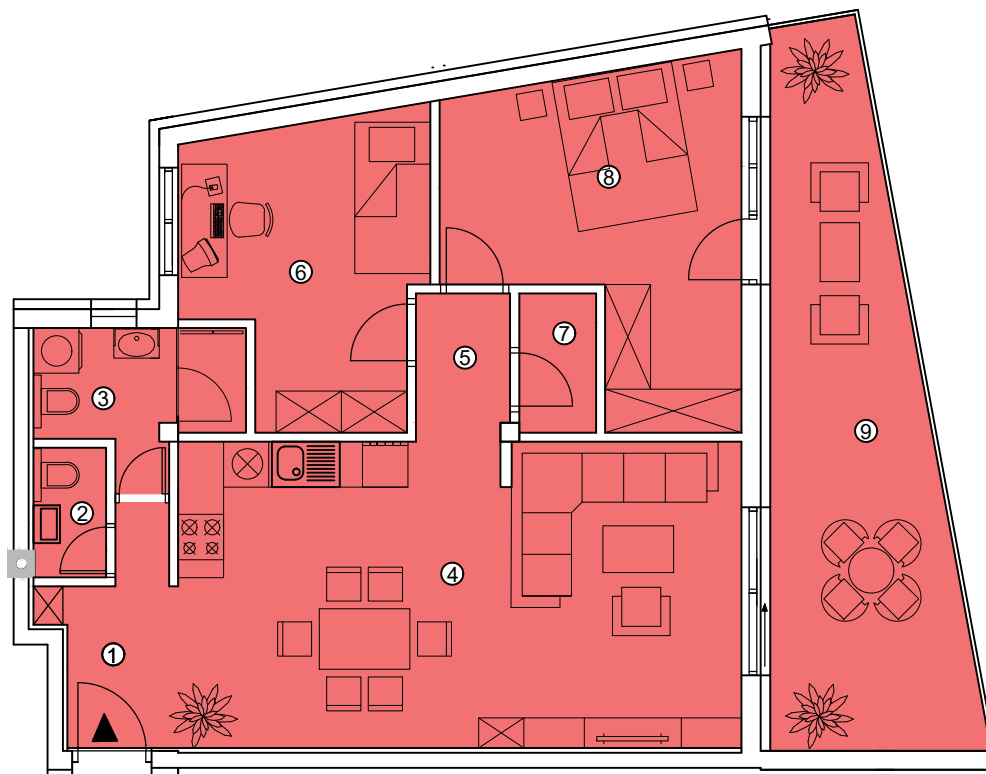


LAMELA A

POTKROVLJE

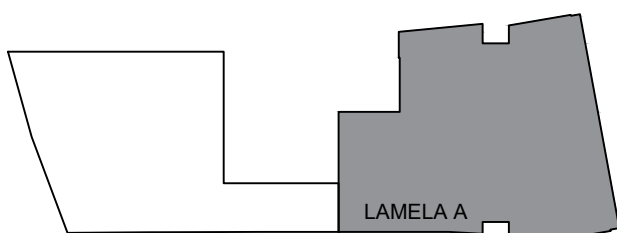
MJ 1:100

STAN 16A

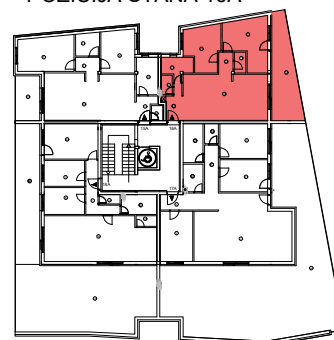


STAN 16A		
1	HODNIK	4,14 m ²
2	WC	1,64 m ²
3	KUPAONICA	4,51 m ²
4	DNEVNI BORAVAK, KUHINJA I BLAGOVAONICA	30,11 m ²
5	DEGAŽMAN	2,41 m ²
6	SOBA	11,52 m ²
7	OSTAVA	1,87 m ²
8	SOBA	14,63 m ²
UKUPNO STAN 16A		70,83 m²
9	TERASA	19,55m ²
SVEUKUPNO STAN 16A		90,38 m²

POZICIJA ZGRADE



POZICIJA STANA 16A

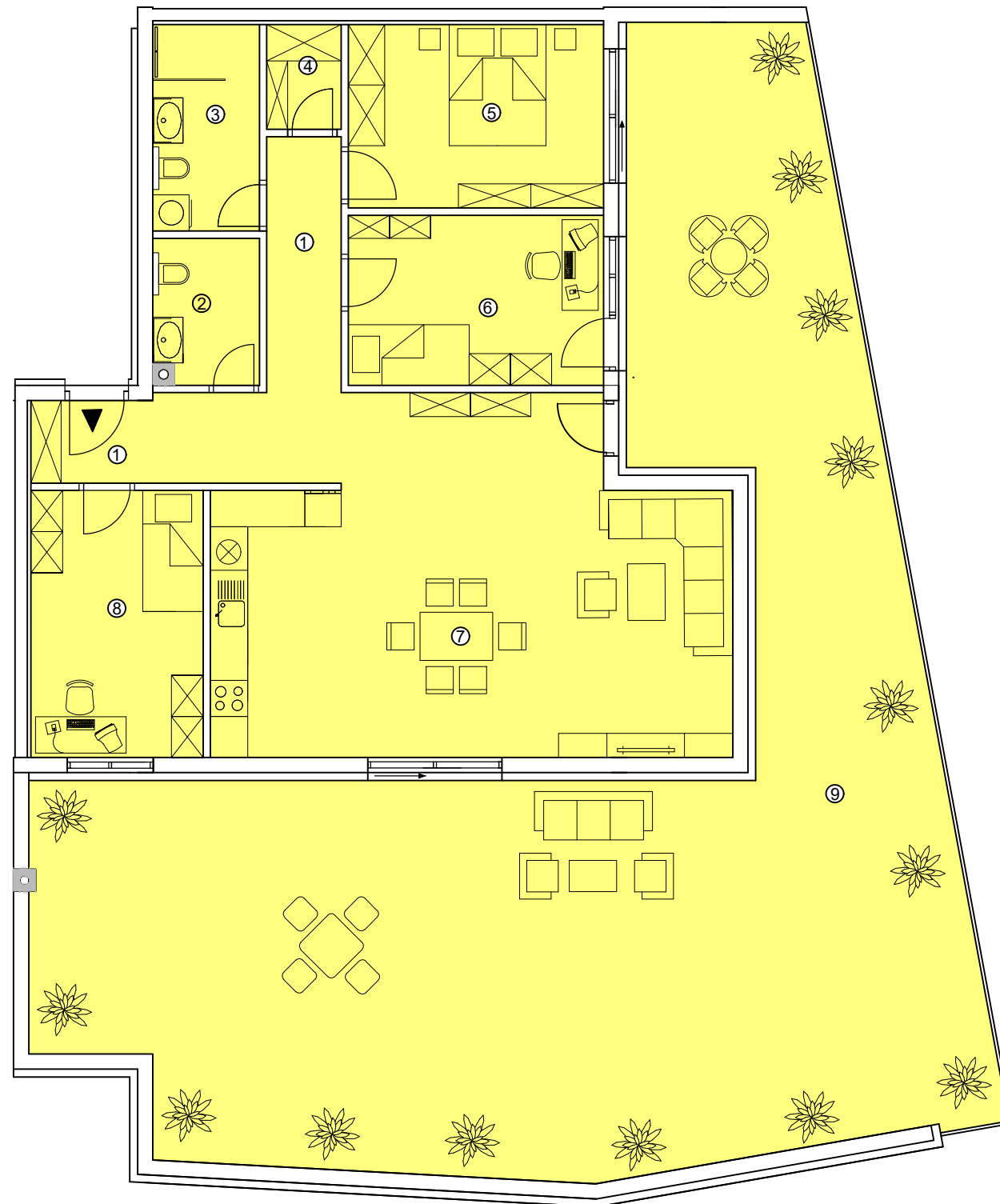
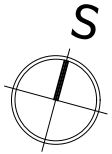


LAMELA A

POTKROVLJE

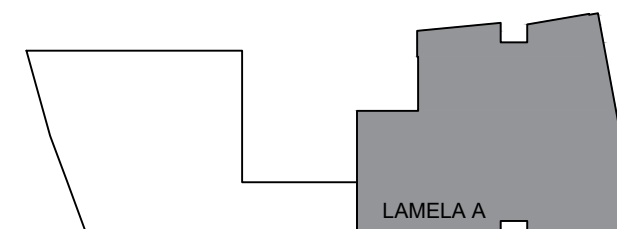
MJ 1:100

STAN 17A

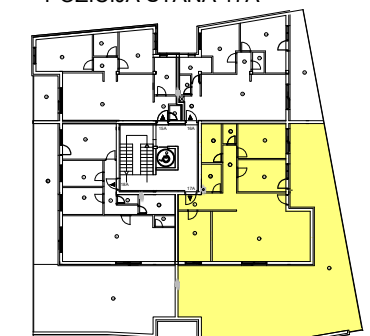


STAN 17A		
1	HODNIK	12,63 m ²
2	WC	4,09 m ²
3	KUPAONICA	5,95 m ²
4	OSTAVA	2,13 m ²
5	SOBA	12,79 m ²
6	SOBA	11,86 m ²
7	DNEVNI BORAVAK, KUHINJA I BLAGAVAONA	45,17 m ²
8	SOBA	12,58 m ²
UKUPNO STAN 17A		107,20 m ²
9	TERASA	135,97 m ²
SVEUKUPNO STAN 17A		243,17 m ²

POZICIJA ZGRADE



POZICIJA STANA 17A

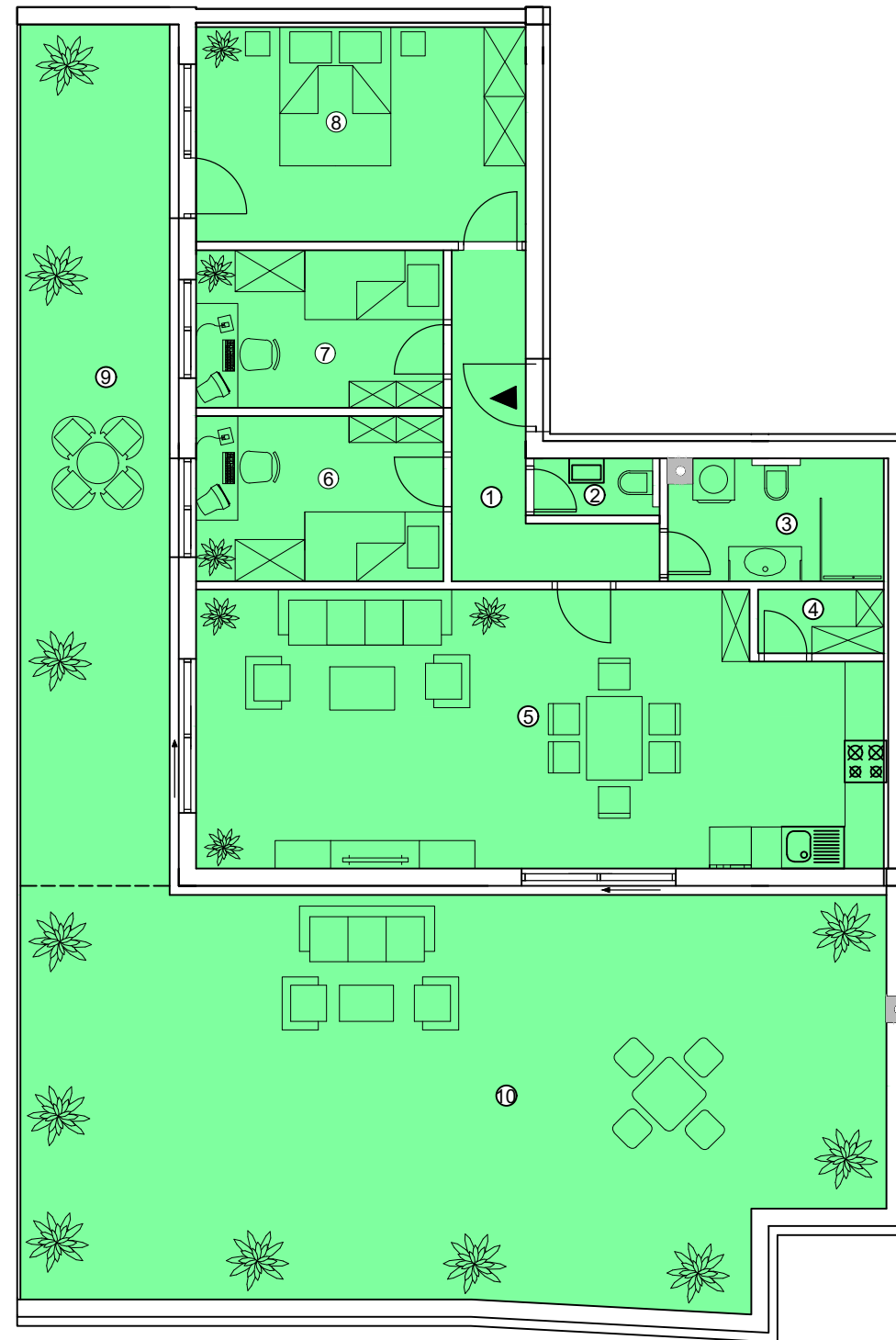
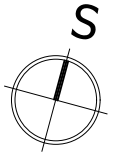


LAMELA A

POTKROVLJE

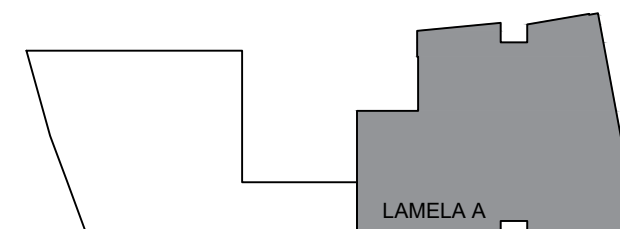
MJ 1:100

STAN 18A



STAN 18A		
1	HODNIK	6,68 m ²
2	WC	1,42 m ²
3	KUPAONICA	5,31 m ²
4	OSTAVA	1,66 m ²
5	DNEVNI BORAVAK, KUHINJA I BLAGAVAONA	37,80 m ²
6	SOBA	8,50 m ²
7	SOBA	8,09 m ²
8	SOBA	14,69 m ²
UKUPNO STAN 18A		84,15 m²
9	NATKRIVENA TERASA	26,67 m ²
10	TERASA	70,89 m ²
SVEUKUPNO STAN 18A		181,71 m²

POZICIJA ZGRADE



POZICIJA STANA 18A

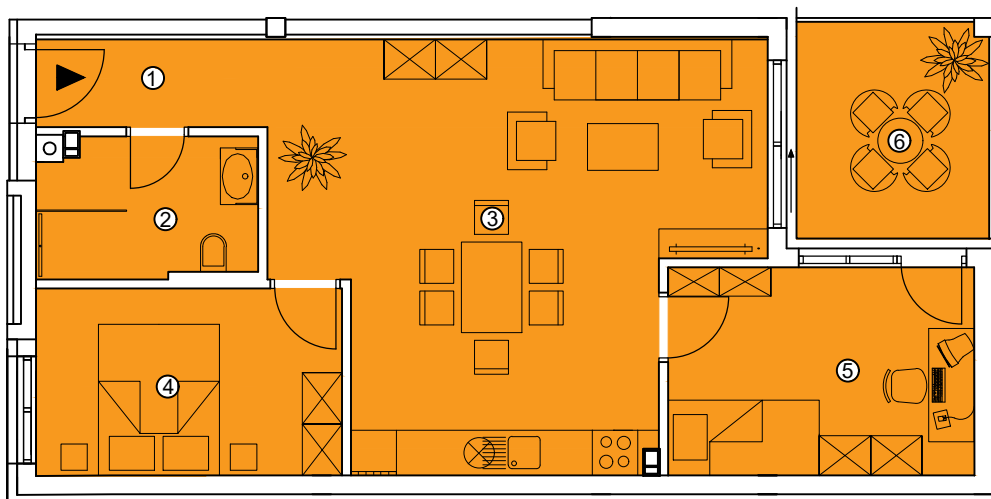


LAMELA B

POTKROVLJE

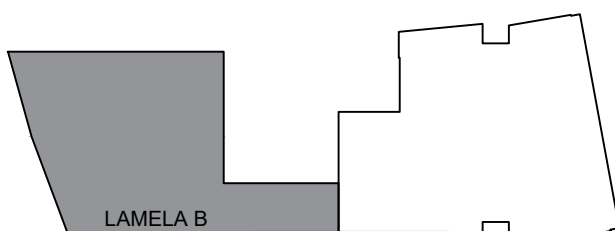
MJ 1:100

STAN 15B

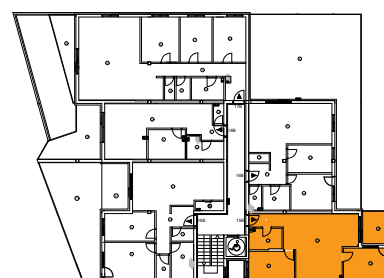


STAN 15B		
1	HODNIK	3,56 m ²
2	KUPAONICA	5,26 m ²
3	KUHINJA, BLAGAVAONICA I DNEVNI BORAVAK	31,11 m ²
4	SOBA	10,01 m ²
5	SOBA	11,15 m ²
UKUPNO STAN 15B		61,09m ²
6	TERASA	7,29 m ²
SVEUKUPNO STAN 15B		68,38 m ²

POZICIJA ZGRADE



POZICIJA STANA 15B

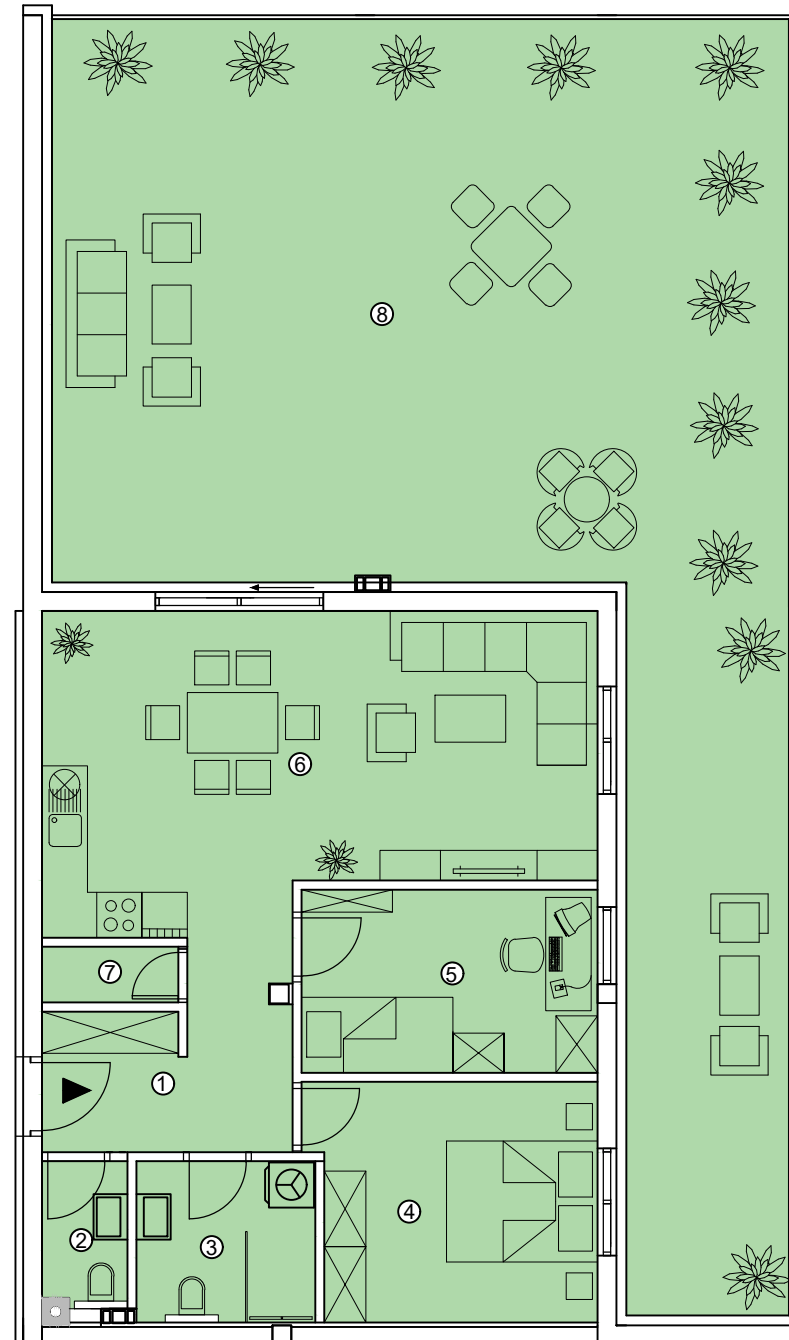
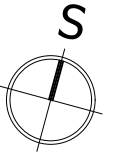


LAMELA B

POTKROVLJE

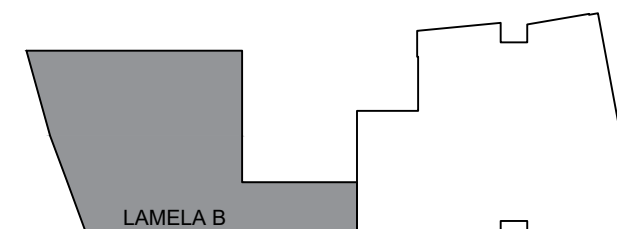
MJ 1:100

STAN 16B

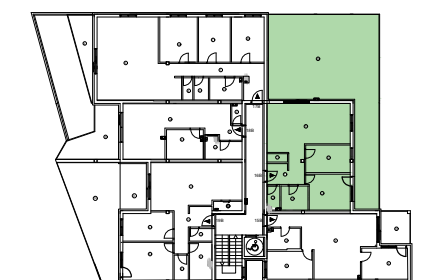


STAN 16B		
1	HODNIK	7,36 m ²
2	WC	2,08 m ²
3	KUPAONICA	4,97 m ²
4	SOBA	11,78 m ²
5	SOBA	9,48 m ²
6	DNEVNI BORAVAK, KUHINJA I BLAGAVAONA	28,70 m ²
7	OSTAVA	1,33 m ²
UKUPNO STAN 16B		65,70 m²
8	TERASA	93,46 m ²
SVEUKUPNO STAN 16B		159,16 m²

POZICIJA ZGRADE



POZICIJA STANA 16B

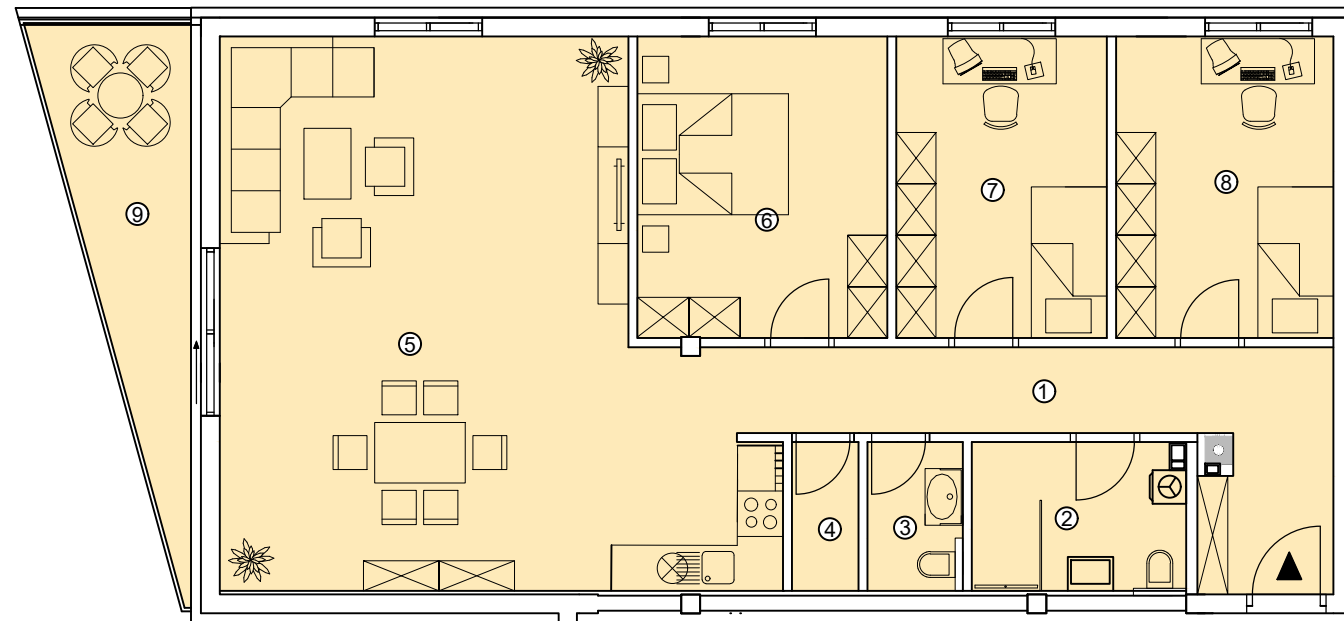
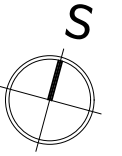


LAMELA B

POTKROVLJE

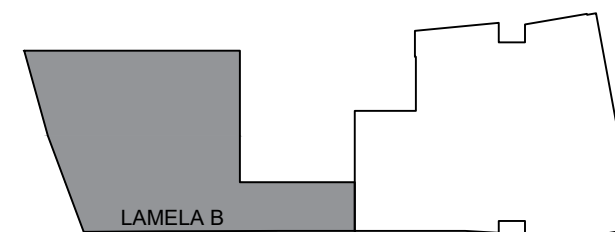
MJ 1:100

STAN 17B

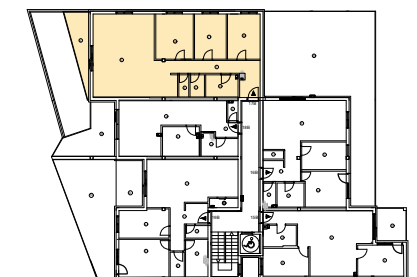


STAN 17B		
1	HODNIK	12,55 m ²
2	KUPAONICA	5,48 m ²
3	WC	2,41 m ²
4	OSTAVA	1,73 m ²
5	KUHINJA, BLAGAVAONICA I DNEVNI BORAVAK	45,44 m ²
6	SOBA	13,19 m ²
7	SOBA	11,11 m ²
8	SOBA	11,48 m ²
UKUPNO STAN 17B		103,39 m²
9	TERASA	8,84 m ²
SVEUKUPNO STAN 17B		112,23 m²

POZICIJA ZGRADE



POZICIJA STANA 17B

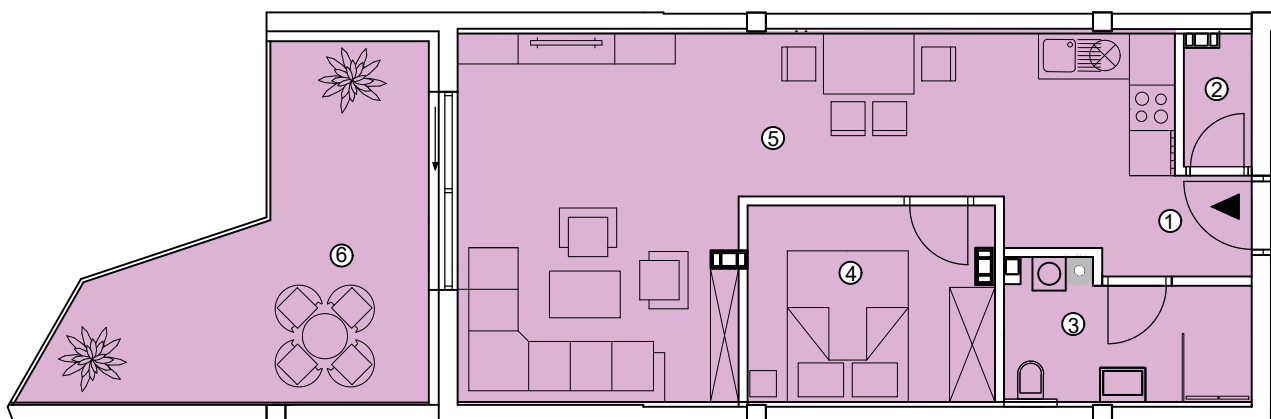
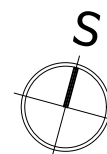


LAMELA B

POTKROVLJE

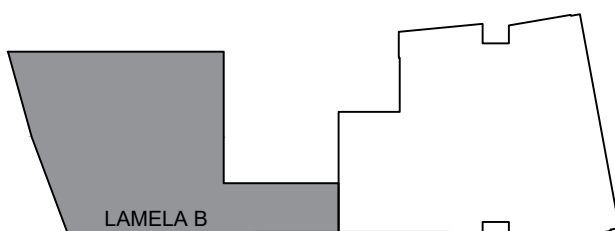
MJ 1:100

STAN 18B

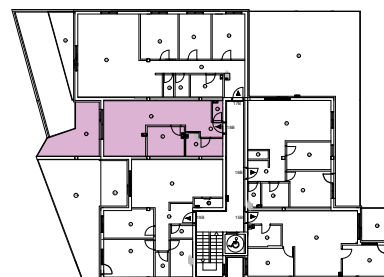


STAN 18B		
1	HODNIK	2,64 m ²
2	OSTAVA	1,50 m ²
3	KUPAONICA	5,25 m ²
4	SOBA	8,37 m ²
5	KUHINJA, BLAGAVAONICA I DNEVNI BORAVAK	31,36 m ²
UKUPNO STAN 18B		49,12 m ²
6	TERASA	15,70 m ²
SVEUKUPNO STAN 18B		64,82 m ²

POZICIJA ZGRADE



POZICIJA STANA 18B

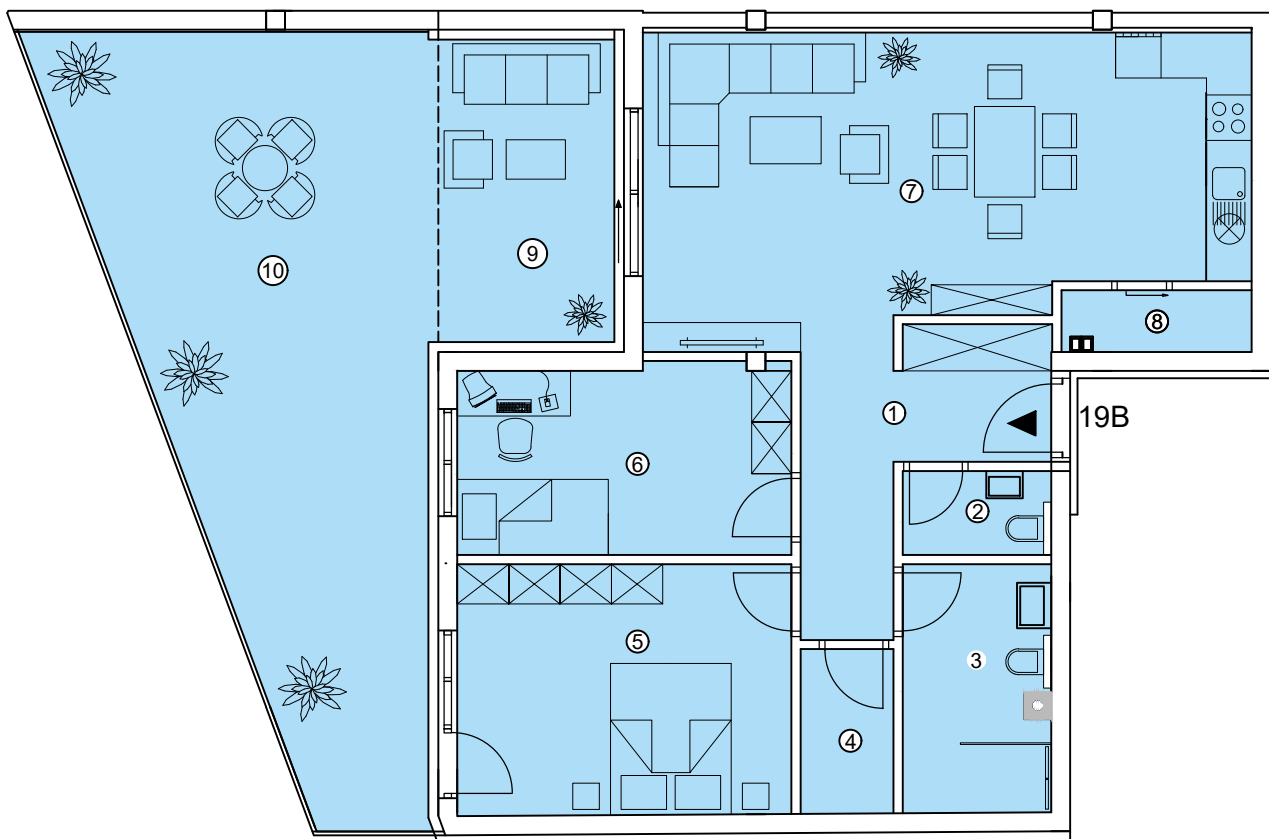
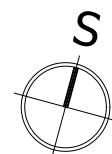


LAMELA B

POTKROVLJE

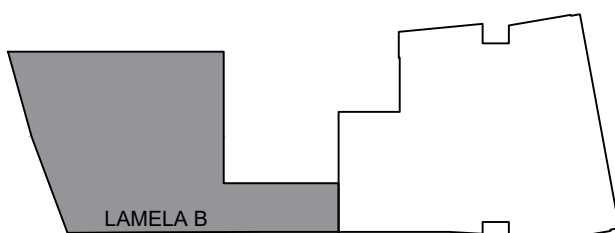
MJ 1:100

STAN 19B



STAN 19B		
1	HODNIK	8,42 m ²
2	WC	2,11 m ²
3	KUPAONICA	6,26 m ²
4	OSTAVA	2,68 m ²
5	SOBA	14,68 m ²
6	SOBA	11,00 m ²
7	KUHINJA, BLAGAVAONICA I DNEVNI BORAVAK	30,51 m ²
8	OSTAVA	1,99 m ²
UKUPNO STAN 19B		77,65 m ²
9	LODA	9,30 m ²
10	TERASA	37,03 m ²
SVEUKUPNO STAN 19B		123,98 m ²

POZICIJA ZGRADE



POZICIJA STANA 19B

